



ARCHITECTURE
ENGINEERING

August 18, 2011

Re: **TRI-COUNTY COUNCIL/CAREER CENTER SITE IMPROVEMENTS PROJECT**
Salisbury, Maryland
2009145.00

ADDENDUM SIX

The contract documents for the above referenced project, dated July 20, 2011 are amended as follows:

CLARIFICATIONS

1. Please note receipt of all addendums on Bid Form (Revised).
2. There is a conflict between the Storm Drain Pipe schedule on page C-301 and the Utility profiles on C-305. Which is the governing entity in this situation the Pipe schedule or the Profile?
Answer: The schedule is correct. See Sketch C-SK1 issued via this addendum.
3. Is the Contractor required to remove the existing culvert pipe between the 2 headwalls (R-12) designated for removal on plan sheet C-101? Are any details available for the existing culvert pipe and headwalls?
Answer: Yes, the entire structure including headwalls, culvert and any foundations/supports, etc. must be removed. The original design drawing from Soule & Associates, sheet 6 of 10, is included with this addendum for reference only. Becker Morgan Group nor Tri-County Council can guarantee the accuracy of the drawing or whether design changes were made during construction.
4. Question regarding Section 3.4A 322300 Plants: Is this what you will require to install the trees & shrubs? Will the Contractor applying final grade amend soil low enough in planting beds where shrubs are required so this process will not need to be taken?
Answer: We assume you are referring to SpecSection 329300 Plants. Section 3.4.A.1 is revised to "... two times as wide as the ball diameter...". Soil amendment for the planting beds will need to be coordinated by the general contractor amongst their sub contractors.

PROJECT MANUAL

1. SECTION 329300 – PLANTS
 - a. REPLACE 3.4.A.1 with the following:
 1. Excavate approximately two times as wide as ball diameter for balled and burlapped and container-grown stock.

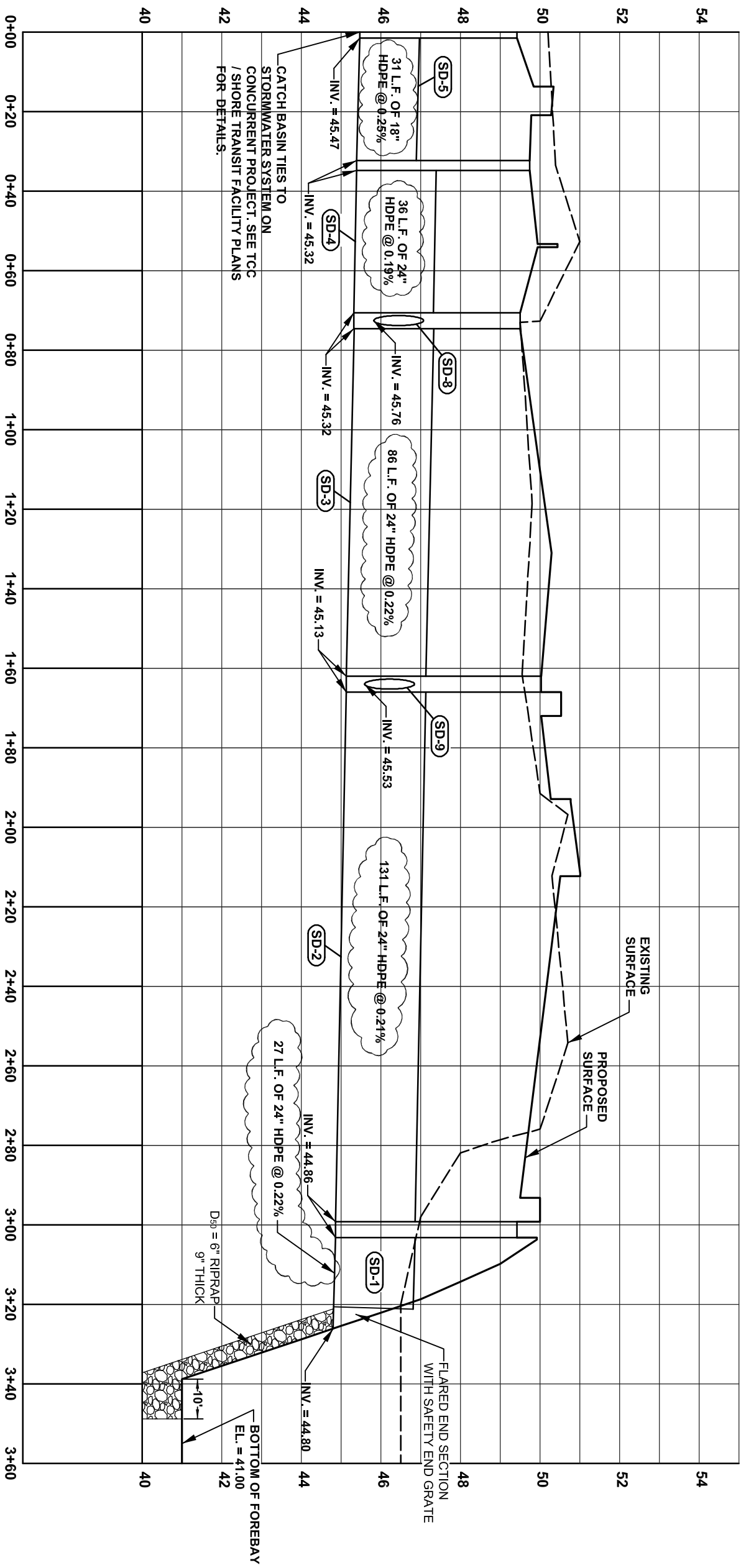
DRAWING

1. SHEET C-305, UTILITY PROFILES
 - a. REPLACE "PROFILE FROM CATCH BASIN 5 THROUGH CATCH BASIN 1" with BMG Sketch C-SK1 issued via this addendum.

Attachment: BMG Sketch C-SK1 (8/18/11)
Soule & Associates, Stormwater Details, Sheet 6 of 10

END OF ADDENDUM NO. SIX

200914500-CC_Addendum6.doc



PROFILE FROM CATCH BASIN 5 THROUGH CATCH BASIN 1

SCALE: HORIZONTAL - 1" = 30'
VERTICAL - 1" = 3'

CATCH BASIN TIES TO STORMWATER SYSTEM ON CONCURRENT PROJECT. SEE TCC / SHORE TRANSIT FACILITY PLANS FOR DETAILS.

D₅₀ = 6" RIPRAP
9" THICK

BOTTOM OF FOREBAY
EL. = 41.00

FLARED END SECTION WITH SAFETY END GRATE

EXISTING SURFACE
PROPOSED SURFACE

LAYER STATE: C-SK1

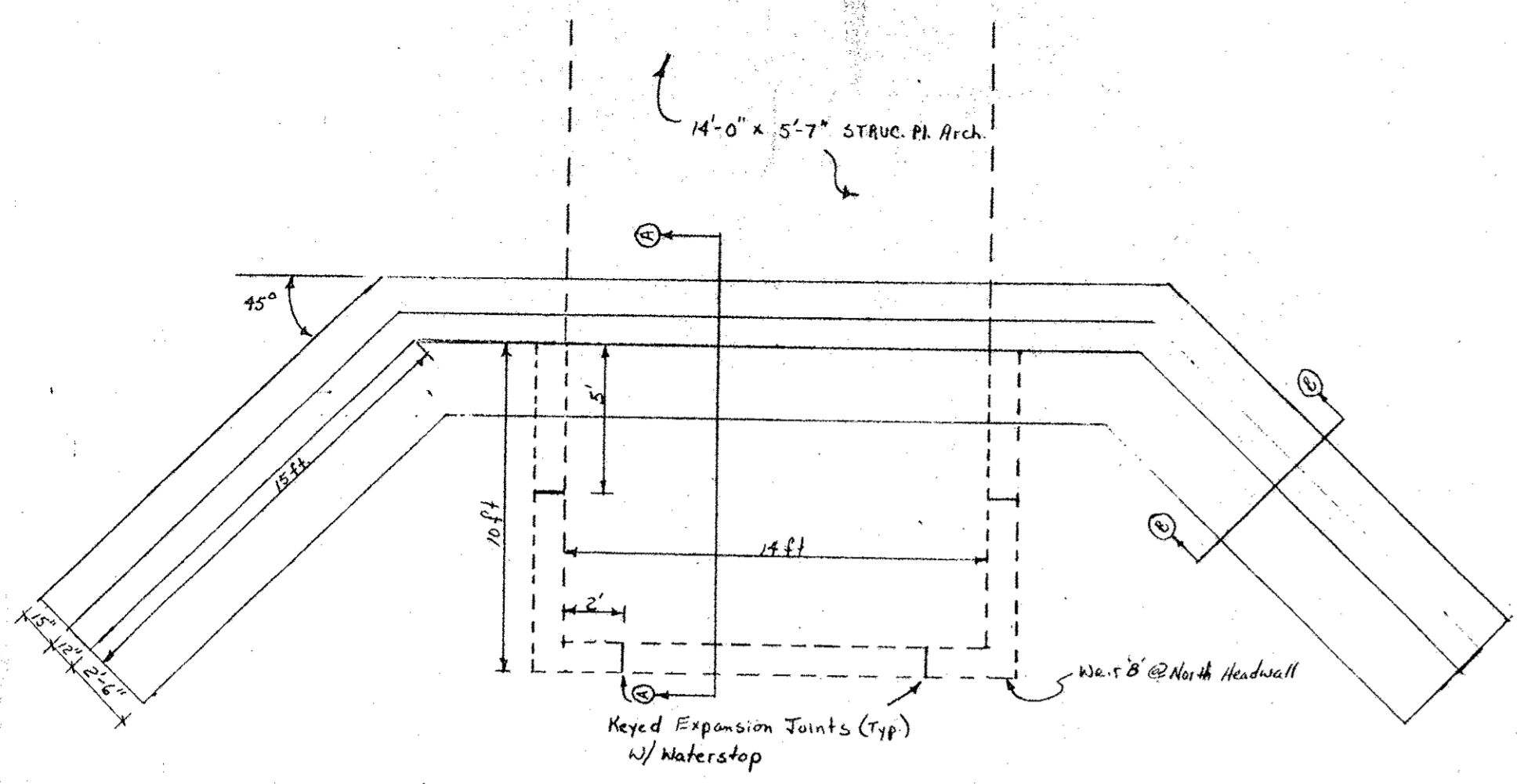
ADDENDUM #6
CAREER CENTER SITE IMPROVEMENTS PROJECT
TRI-COUNTY COUNCIL
SALISBURY
WICOMICO COUNTY, MARYLAND



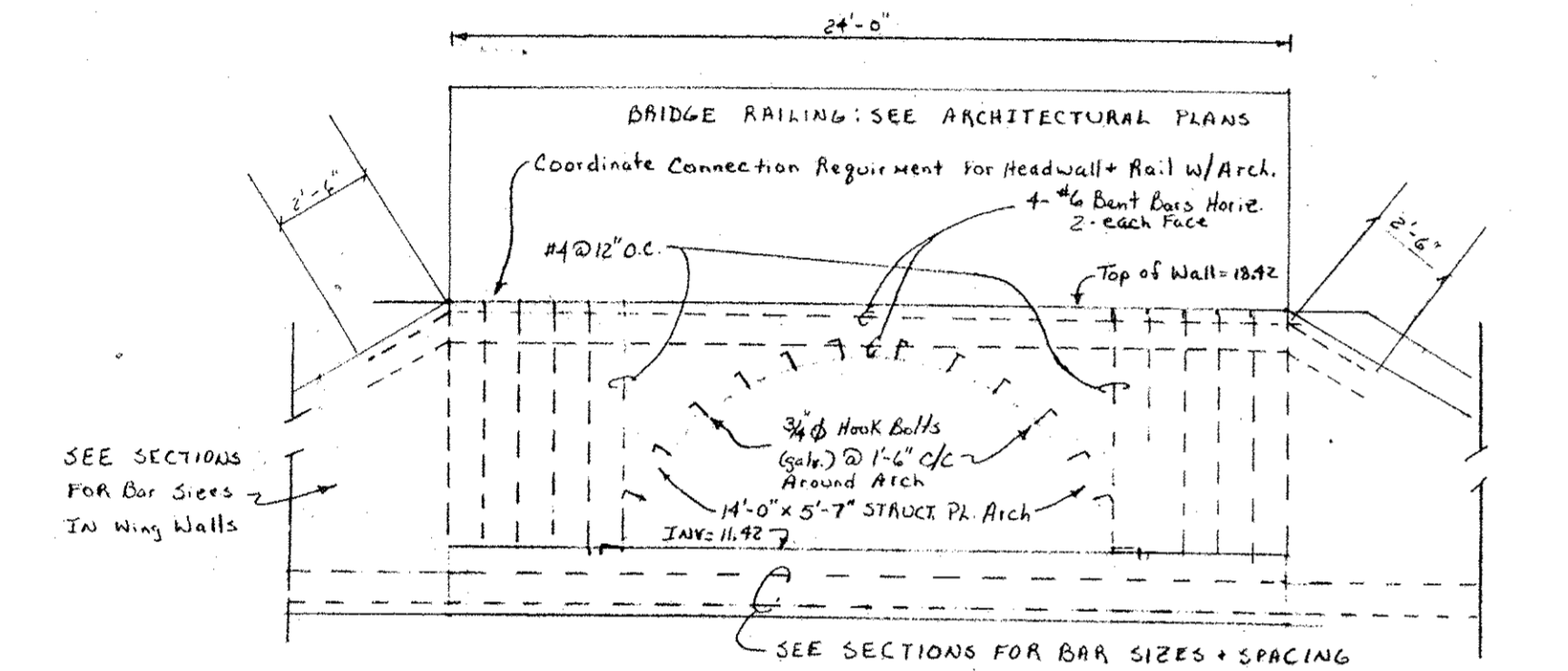
ARCHITECTURE
ENGINEERING
Salisbury
312 West Main St. Suite 300
Salisbury, MD 21801
Ph. 410.546.9100
Fax 410.546.5824

BMG: 2009145.00
SCALE: AS NOTED
DATE: 08/18/11
DRAWN BY: H.M.S.

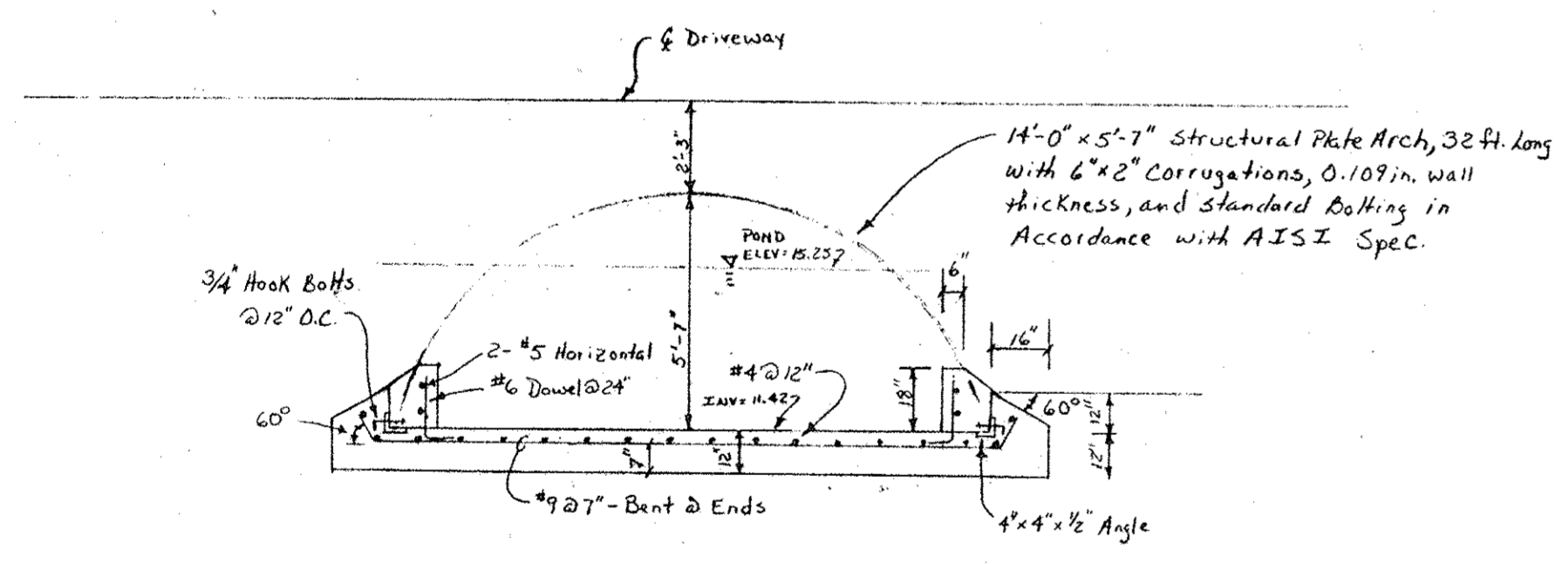
C-SK1



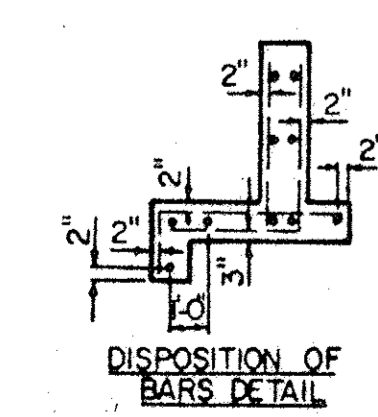
HEADWALL PLAN
1" = 5'



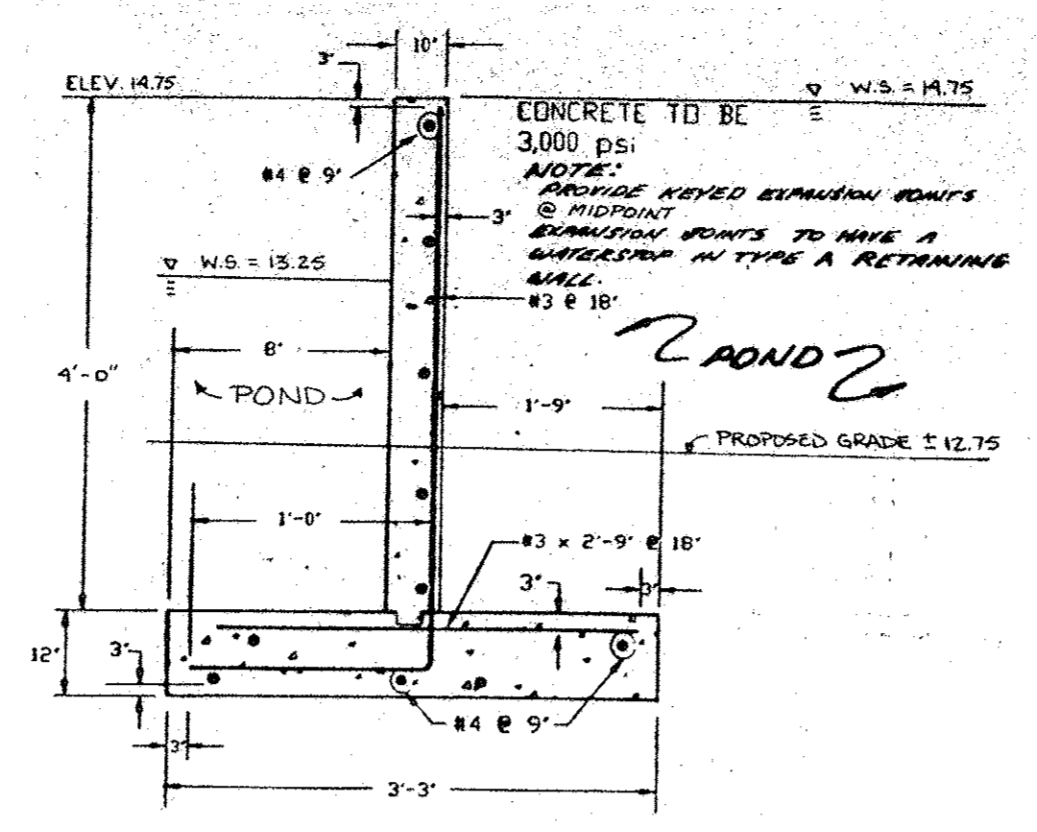
HEADWALL ELEVATION
1" = 5'



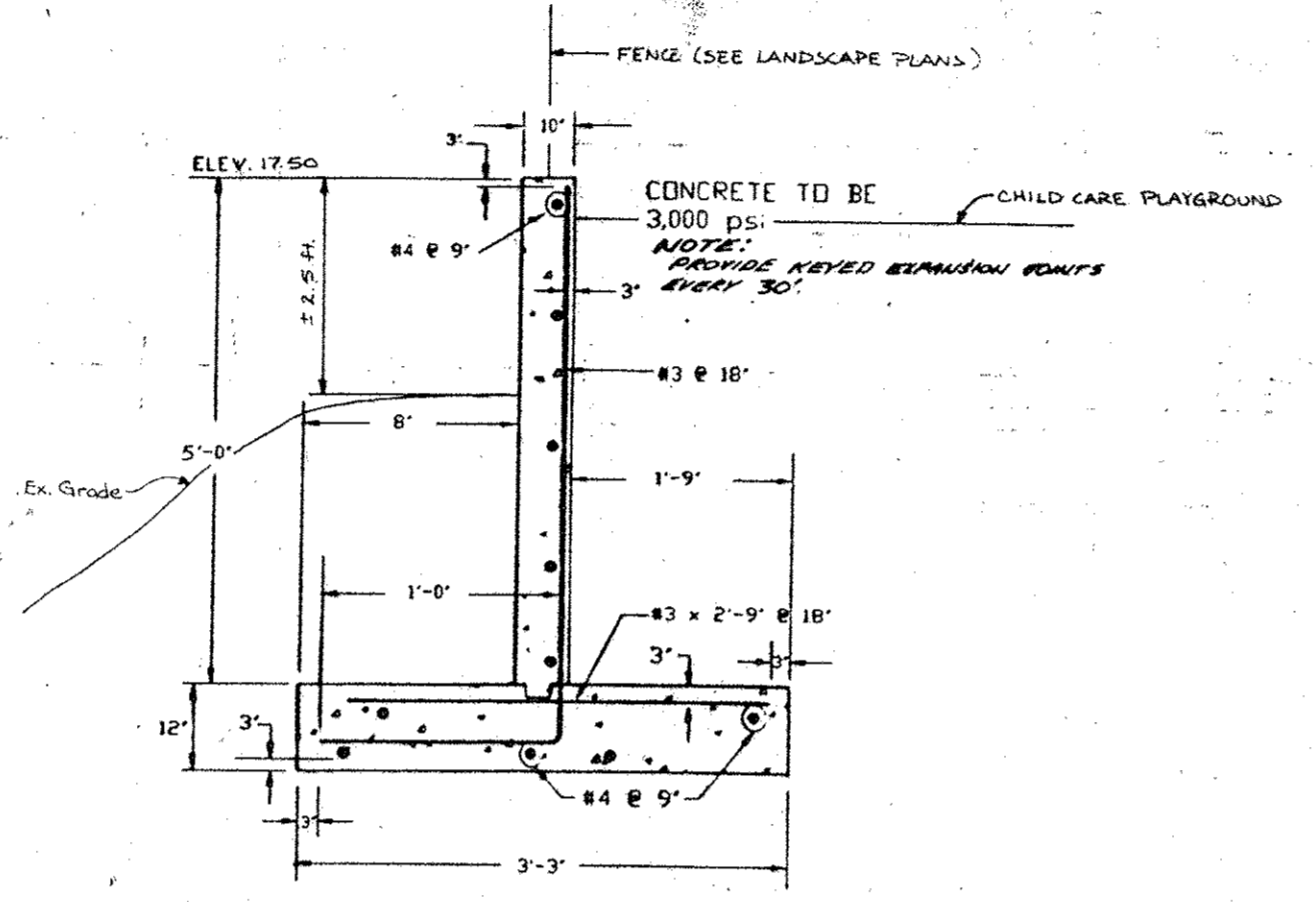
STRUCTURAL PLATE ARCH ELEVATION
1/4" = 1 ft.



GENERAL NOTES:
SPECIFICATIONS: LATEST S.H.A.
CONCRETE: SEE S.H.A. SPECIFICATIONS
REINFORCING: DEFORMED STEEL BARS #4 & #6
CHAMFER: ALL EXPOSED EDGES 1" X 1" OR AS DIRECTED

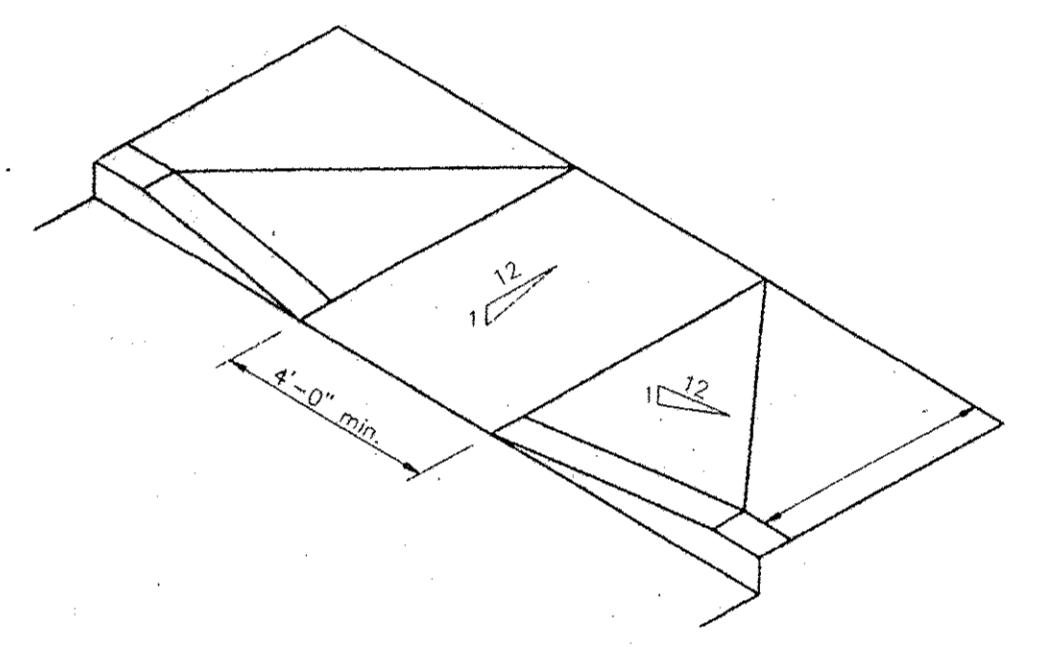
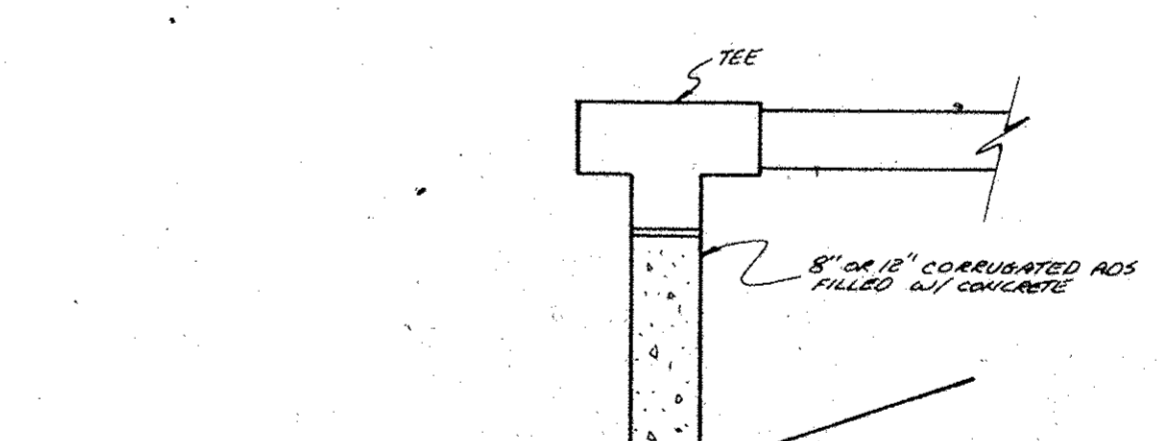
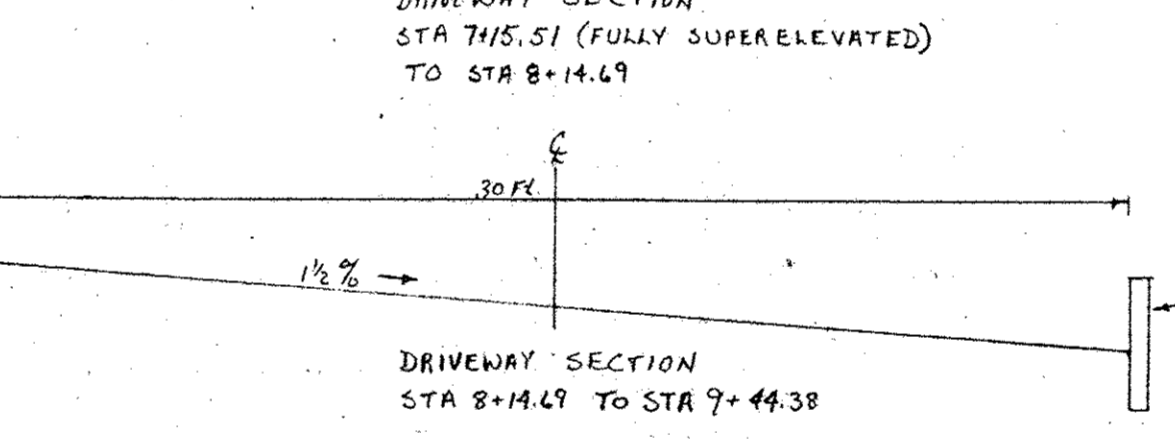
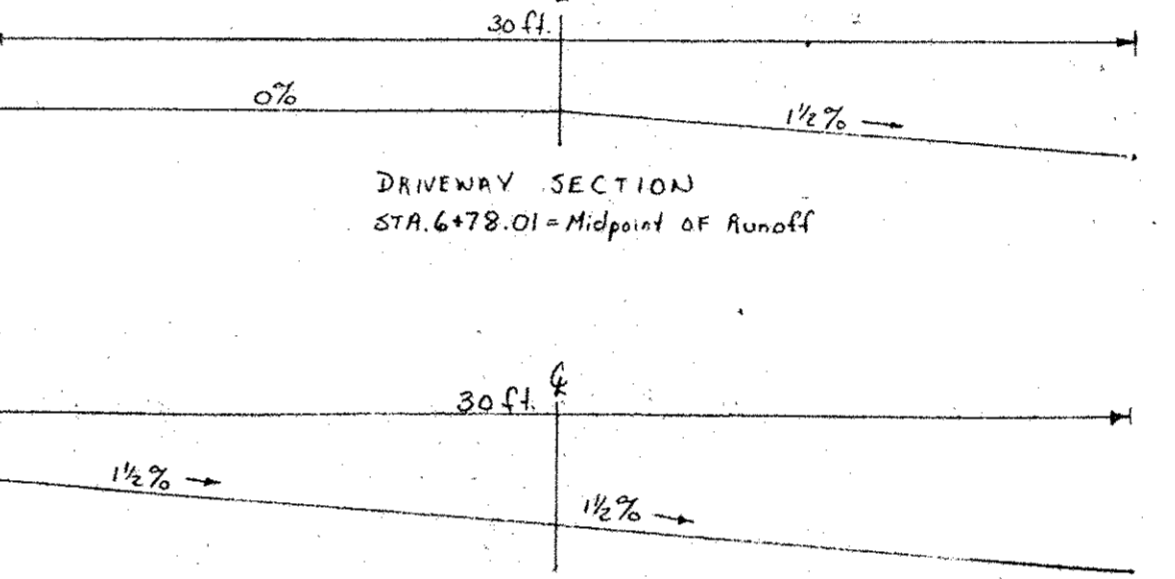
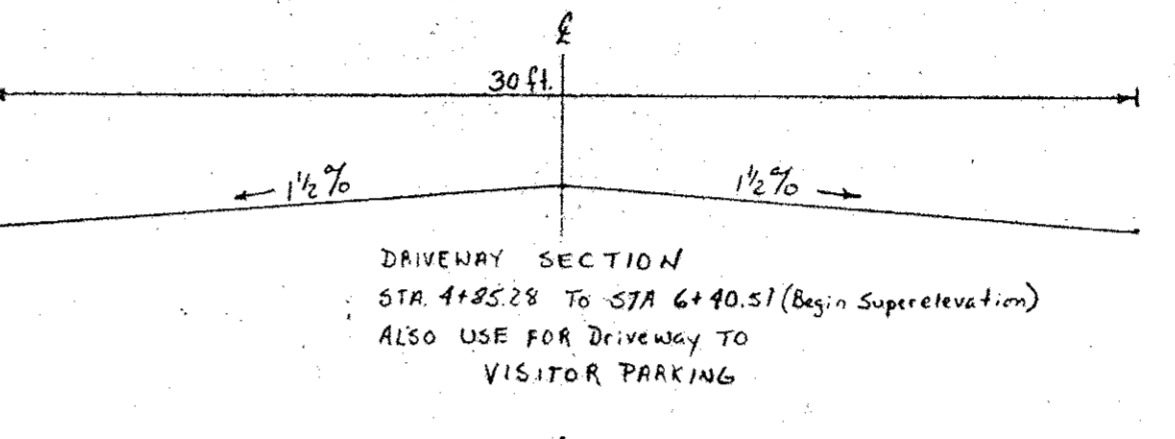
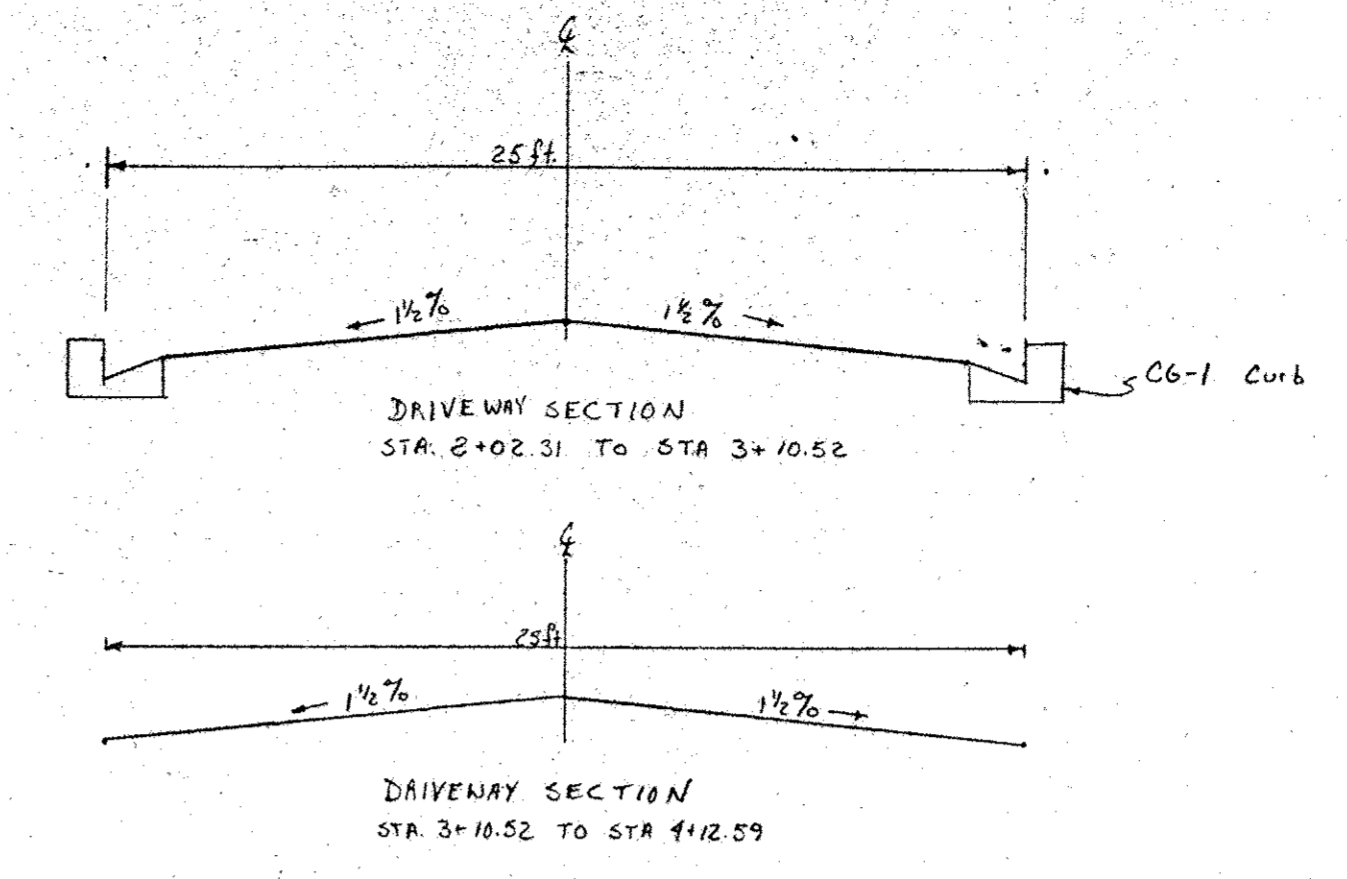


WEIR "A"
N.T.S.



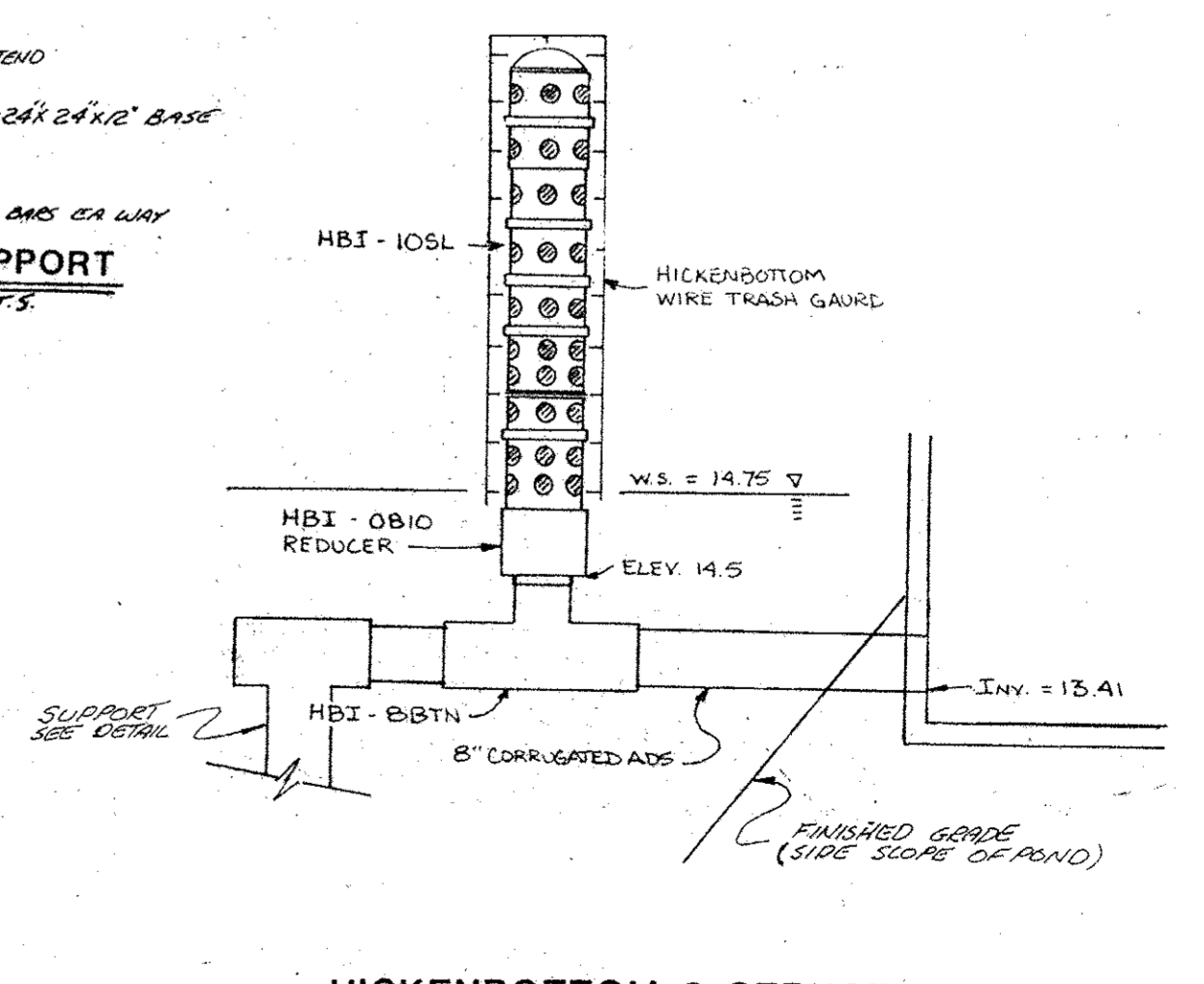
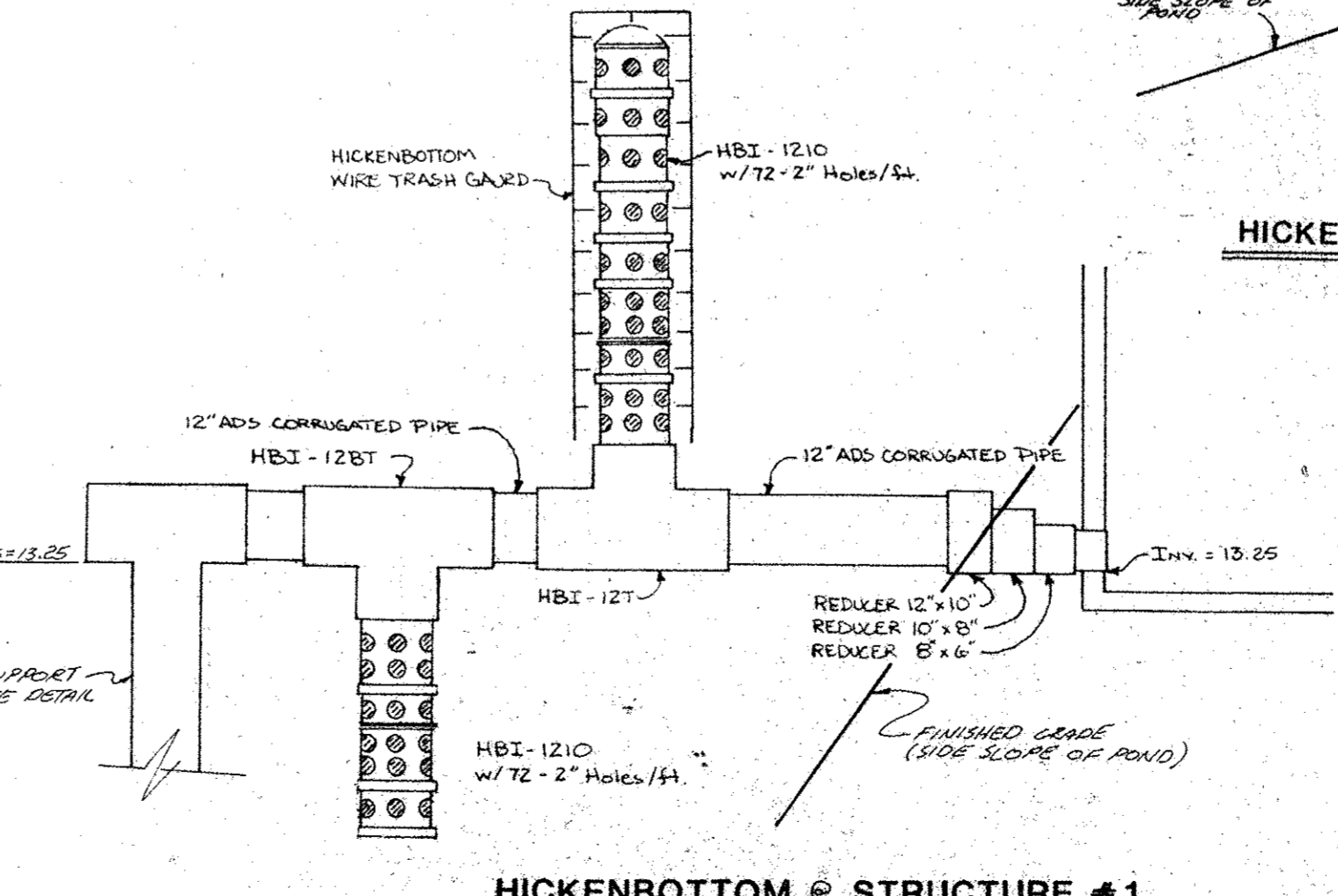
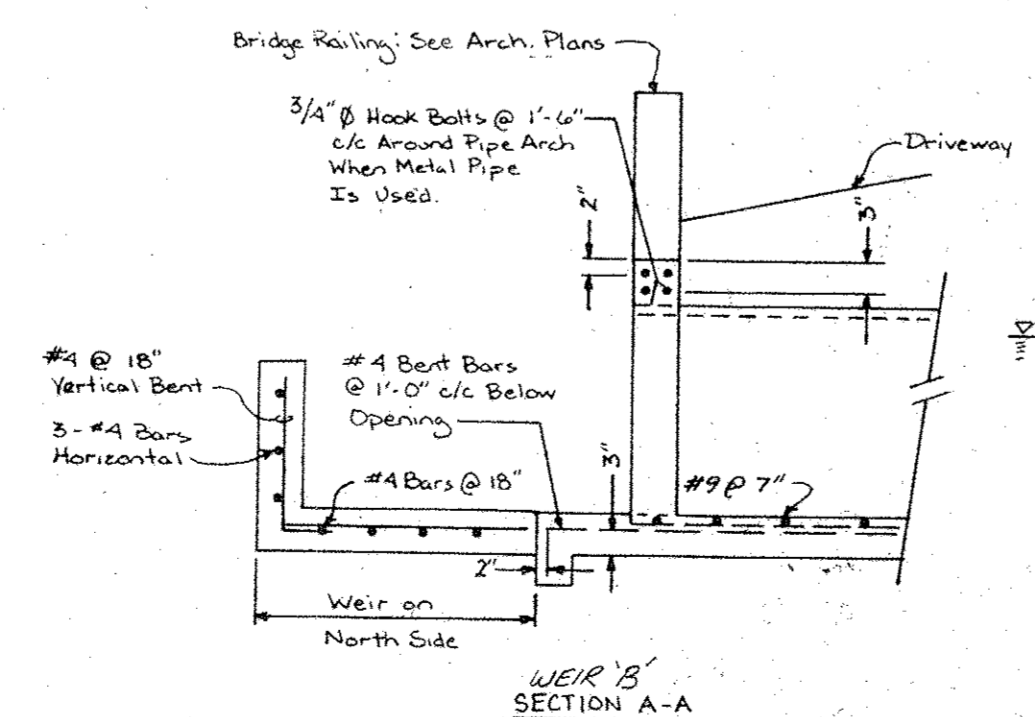
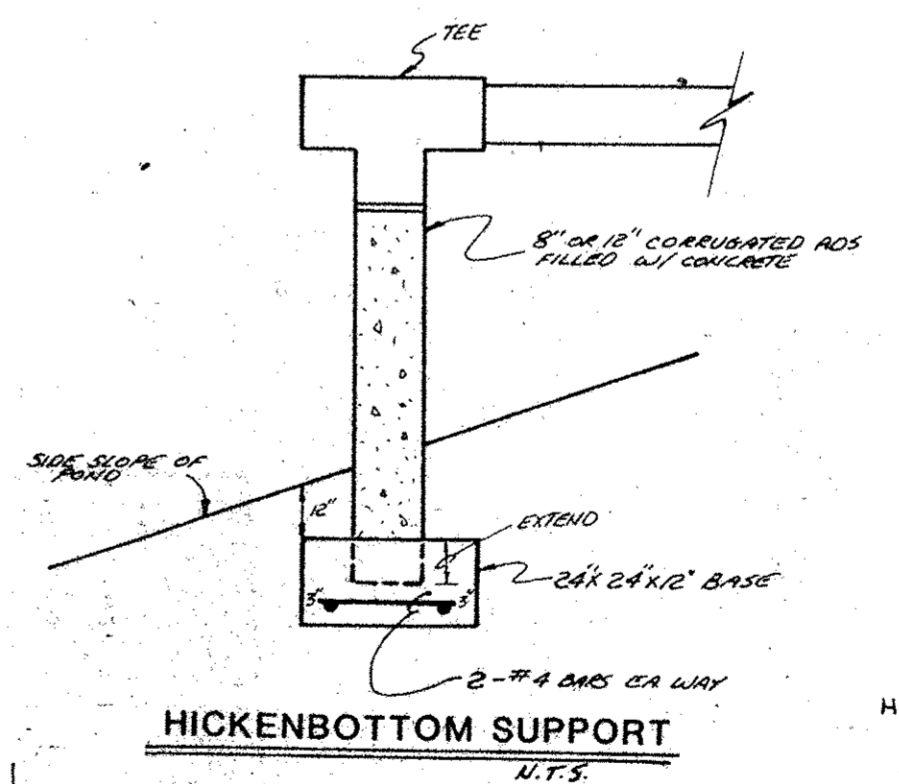
RETAINING WALL @ CHILD CARE PLAYGROUND
N.T.S.

DRIVEWAY SECTIONS



HANDICAP RAMP DETAIL
NTS

Unless otherwise noted
All concrete to be 4,000 psi
All rebar to be Grade 60
All structural steel to be A36



SOULÉ & ASSOCIATES
ENGINEERING / SURVEYING / PLANNING
122 ARLINGTON ROAD
ARLINGTON BUSINESS CENTER
SALISBURY, MARYLAND 21801
(410) 742-7797

REVISIONS	Date	Issued for

STORMWATER DETAILS
FILTRONIC COMTEK FACILITY
PARSONS ELECTION DISTRICT
WICOMICO COUNTY, MARYLAND

Designed By	
Drawn By	
Date	
Job No.	94-173
Drawing File No.	
Sheet No.	6 OF 10