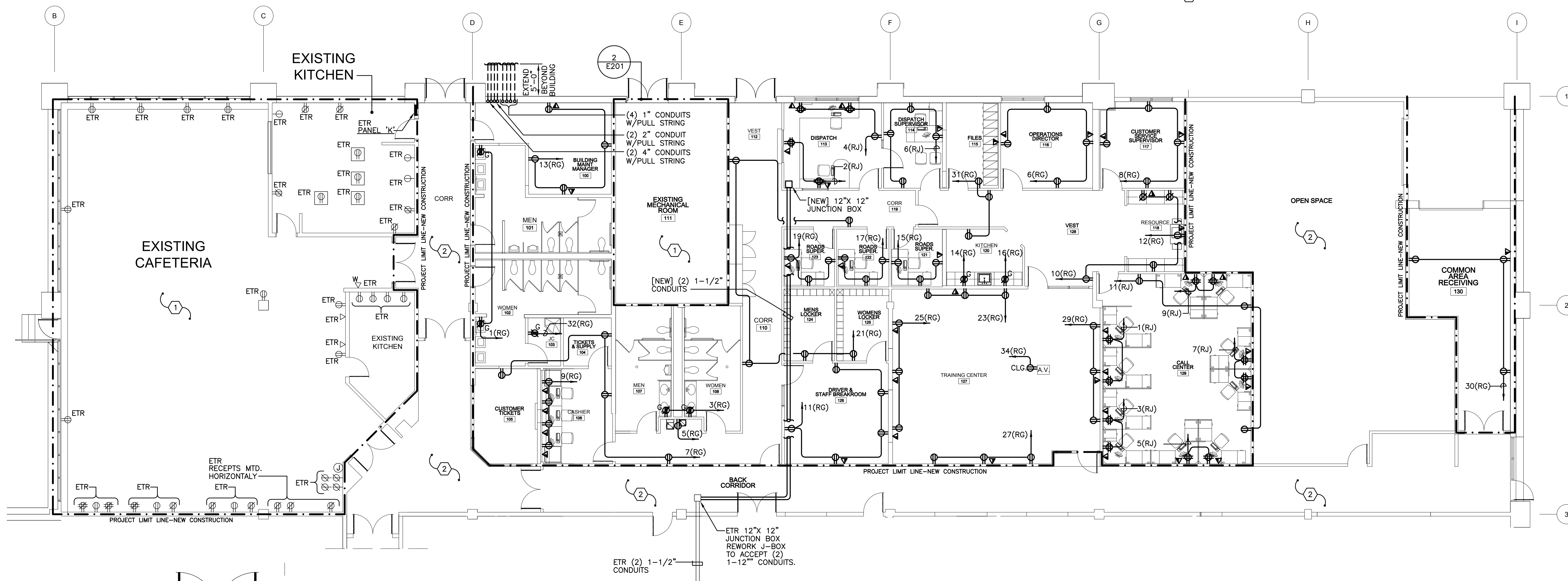


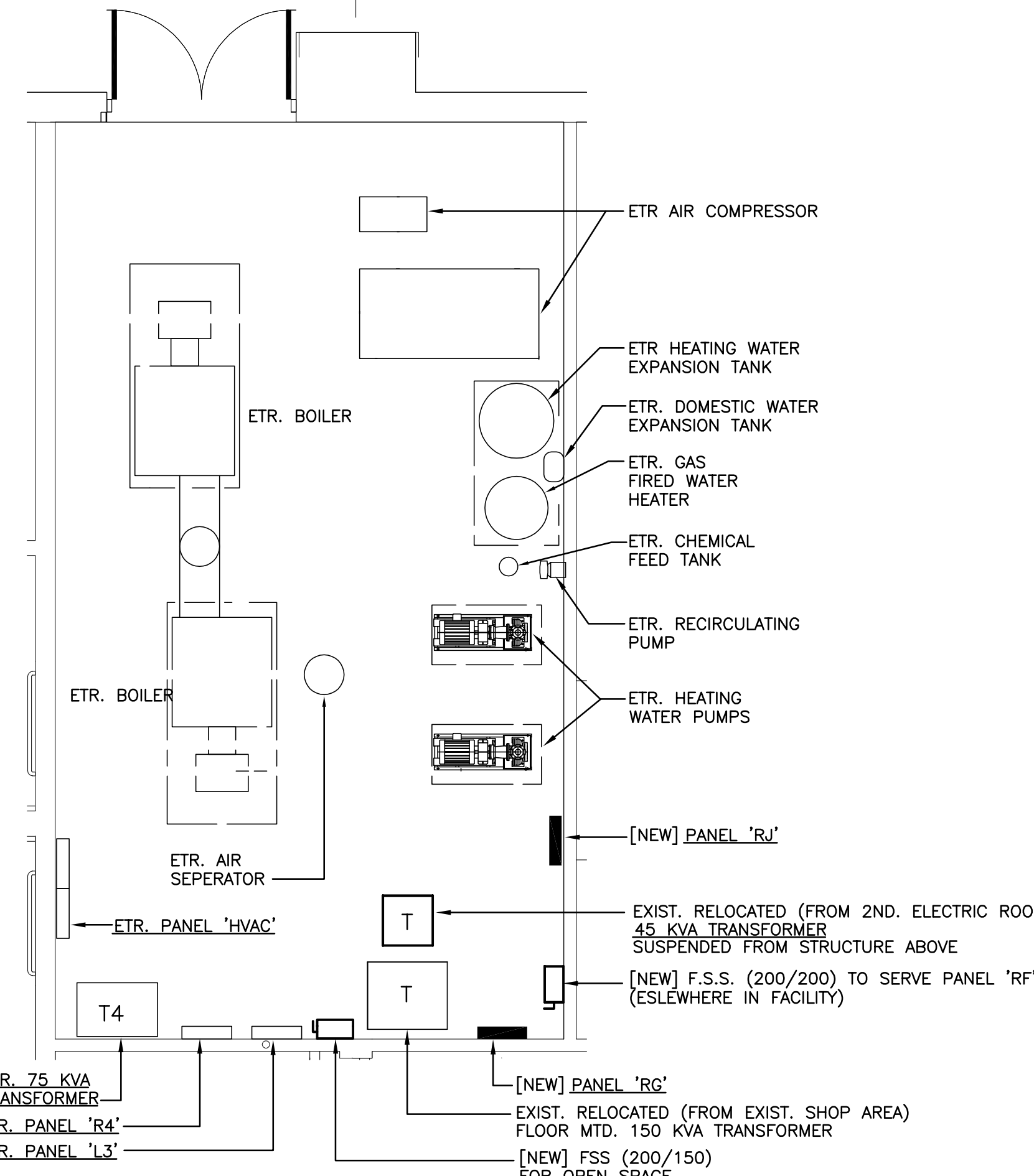
SPECIFIC NOTES (APPLY TO DRAWING E201 WHERE INDICATED):

- 1 THIS AREA IS EXISTING TO REMAIN.
- 2 WORK IN THIS AREA PROVIDED UNDER SEPARATE CONTRACT.



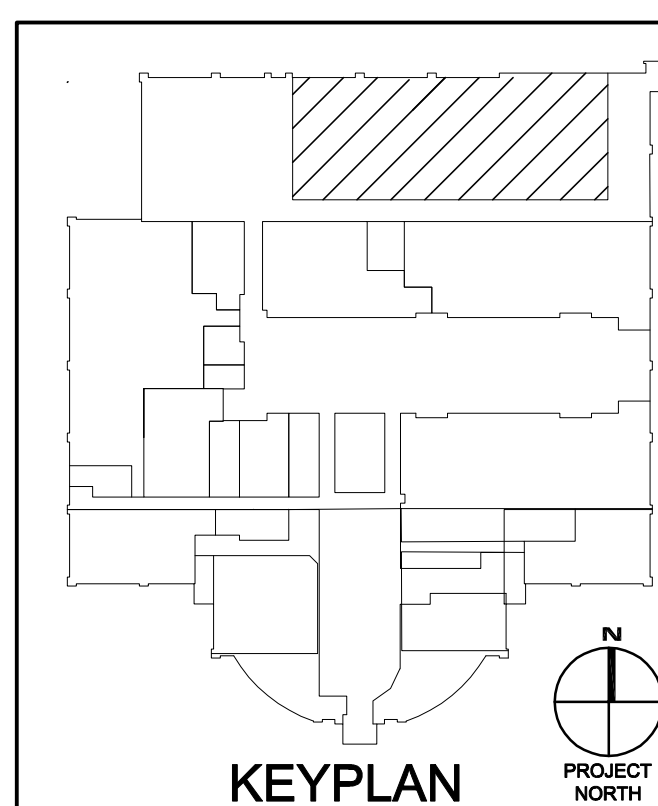
1 FLOOR PLAN - POWER

SCALE: 1/8" = 1'-0"



2 PART PLAN - MECHANICAL ROOM

SCALE: 1/8" = 1'-0"



KEYPLAN

BECKER MORGAN GROUP

ARCHITECTURE ENGINEERING

Dover, DE
309 S Governors Ave
Dover, DE 19904
302.734.7950

Salisbury, MD
312 West Main St. Suite 300
Salisbury, MD 21801
410.546.9100

Wilmington, NC
3205 Randall Parkway, Suite 211
Wilmington, NC 28403
910.341.7600

www.beckermorgan.com

SP SCHLENGER/PITZ & ASSOCIATES, INC.
Consulting Engineers

15 West Aylesbury Road, Timonium, MD 21093
Phone 410.561.1337 Fax 410.561.1446

7 Old Farm Lane, Shrewsbury, PA 17361
Phone 717.227.2320 Fax 717.227.9916

4 North Main Street, Salisbury, DE 19375
Phone 302.436.2733 Fax 302.436.5211

www.speengineers.com © Copyright 2010

"Professional Certification. I hereby certify that these documents were prepared or approved by me, and that I am a duly licensed professional engineer under the laws of the state of Maryland, License No. 16961, Expiration Date: 2012-06-14."

TCC/SHORE TRANSIT EXISTING BUILDING

31901 TRI-COUNTY WAY
SALISBURY, MD 21804

ISSUED FOR BIDDING ONLY

DATE: 03/29/11

SHEET TITLE

FLOOR PLAN POWER

KEY PLAN

MARK	DATE	DESCRIPTION
	03/29/11	ISSUED FOR BIDDING
	2/1/2011	ISSUED FOR BIDDING
PROJECT NO: 2009145.00		
DATE: 03/29/11		
SCALE:		
DRAWN BY: MH PROJ MGR: DAS		

E201