

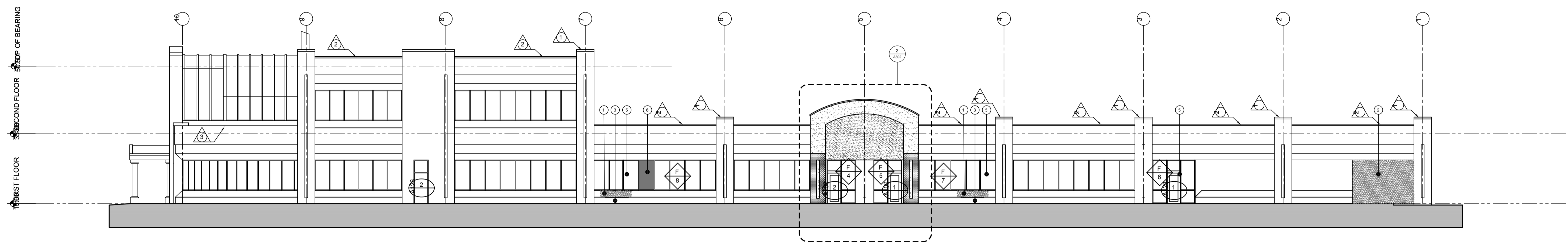


1 PROPOSED SOUTH ELEVATION
SCALE: 3/32" = 1'-0"

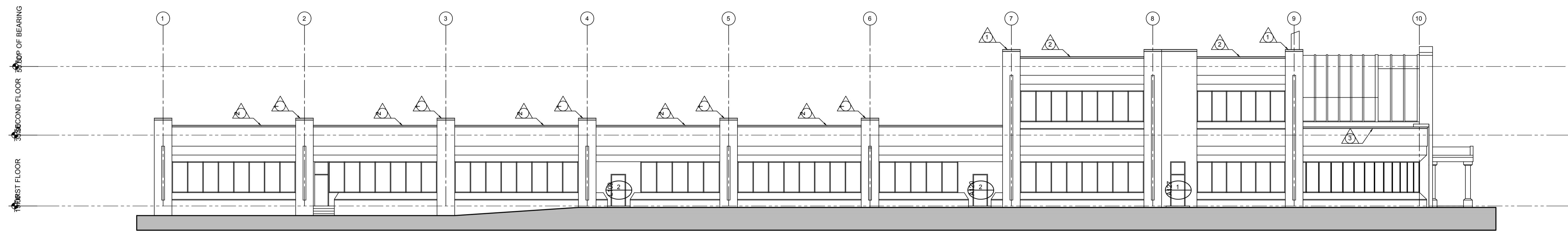
MATERIALS LEGEND	
1	WATER MANAGED E.I.F.S. SYSTEM
2	STAMPED WATER MANAGED E.I.F.S. SYSTEM
3	BRICK (MATCH EXISTING)
4	RELOCATED OVERHEAD ROLLING DOOR
5	NEW STOREFRONT - MATCH EXISTING
6	SPANDREL GLASS INFILL

RENOVATIONS	
1	NEW BRICK PILASTER CAP - REFER TO PILASTER CAP DETAIL
2	NEW METAL COPING - MATCH EXISTING STOREFRONT COLOR
3	NEW CURVED METAL COPING, SEGMENTED COPING WILL NOT BE ACCEPTED REFER TO COPING DETAIL
4	REMOVE, RECONDITION, TO LIKE NEW AND REINSTALL EXISTING ROOF LADDER.

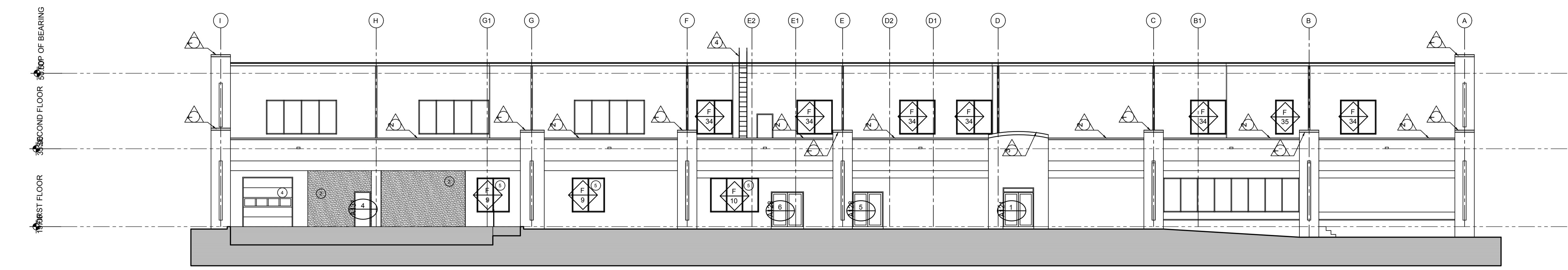
REVISIONS		
NO.	DATE	REMARKS



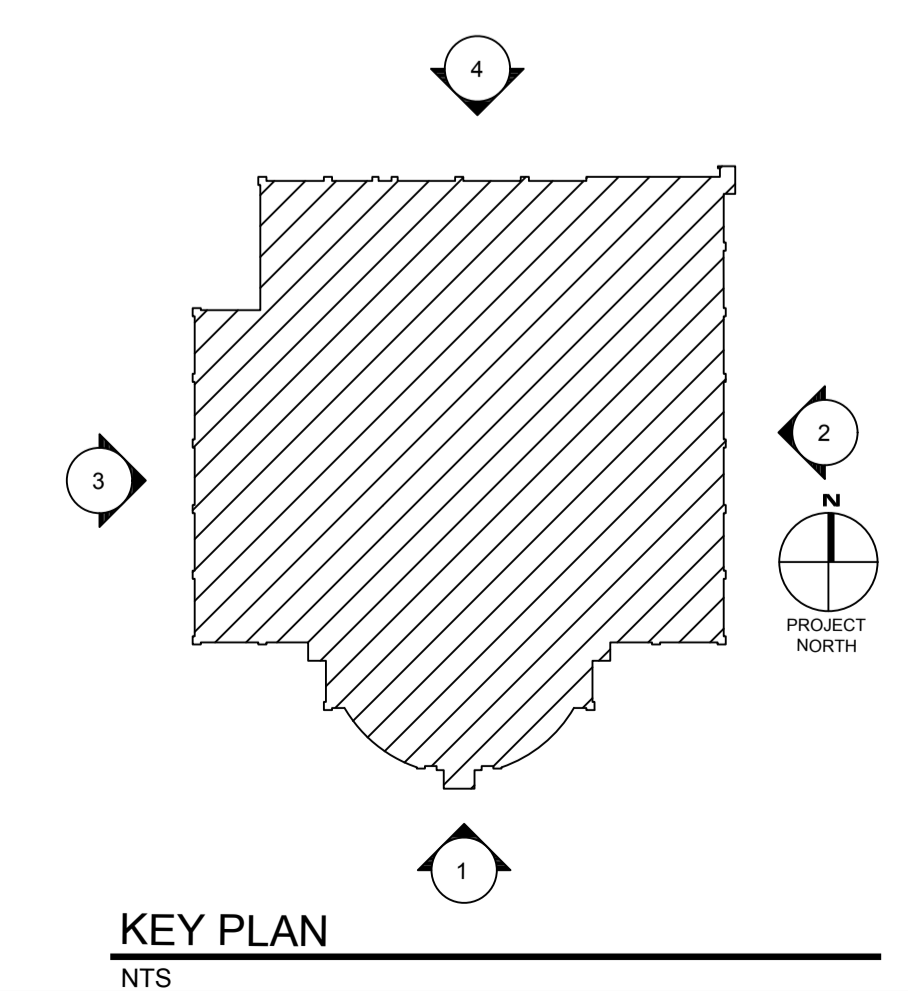
2 PROPOSED EAST ELEVATION
SCALE: 3/32" = 1'-0"



3 EXISTING WEST ELEVATION
SCALE: 3/32" = 1'-0"



4 PROPOSED NORTH ELEVATION
SCALE: 3/32" = 1'-0"



LEGIBILITY: PRINT THESE DRAWINGS ON ARCHITECTURAL PAPER APPROVED BY THE BOARD OF PROFESSIONAL ENGINEERS FOR THE LANDS OF THE STATE OF MARYLAND
KERRI VOTTA LOURIE, INC. 2027
LUXURIOUS LIFE, LOUISIANA

ARCHITECTURE
ENGINEERING
INCORPORATED
IOTT
310 HAMMOND ST. SUITE 109 SALISBURY, MARYLAND
(410) 749-7229 • FAX (410) 749-0001

TRI - COUNTY MULTI-PURPOSE CENTER
BUILDING ENVELOPE AND
INTERIOR RENOVATION
SALISBURY, MARYLAND
EXTERIOR ELEVATIONS

PRINT DATE: 11.1.2010
IOTT PROJ. NO.: 09-035
DESIGN BY: JI
DRAWN BY: JT
SCALE: AS NOTED
STAGE: ISSUED FOR BID
DWG. FILE: 09-035-A300

A
300