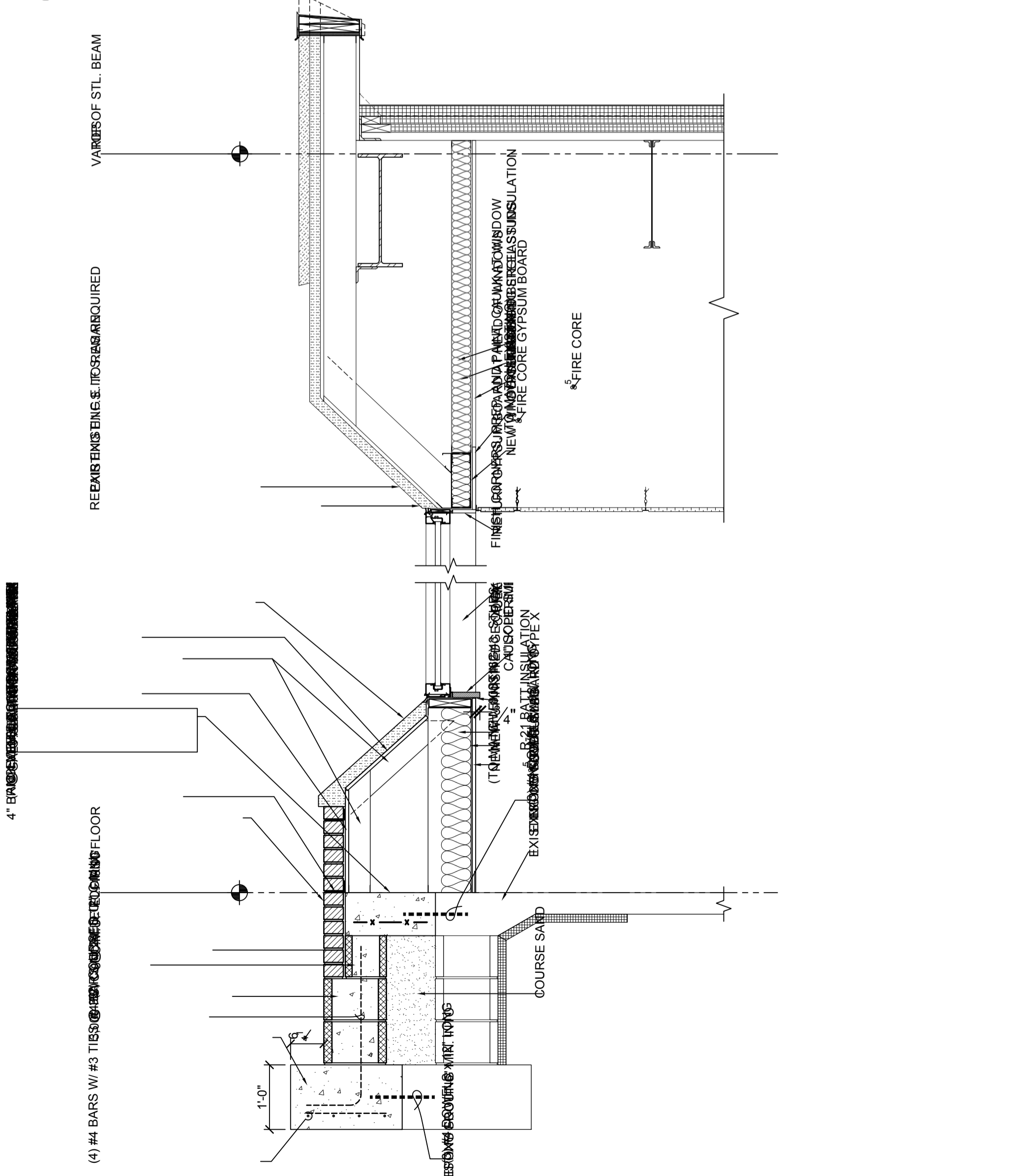
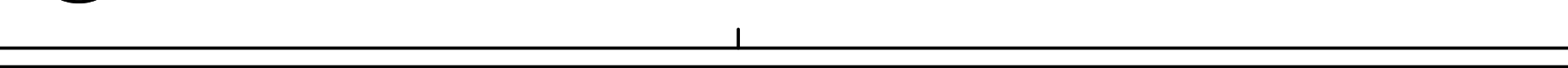


4 PARTIAL WALL SECTION - FIRE SHUTTER
SCALE: 1/2" = 1'-0"

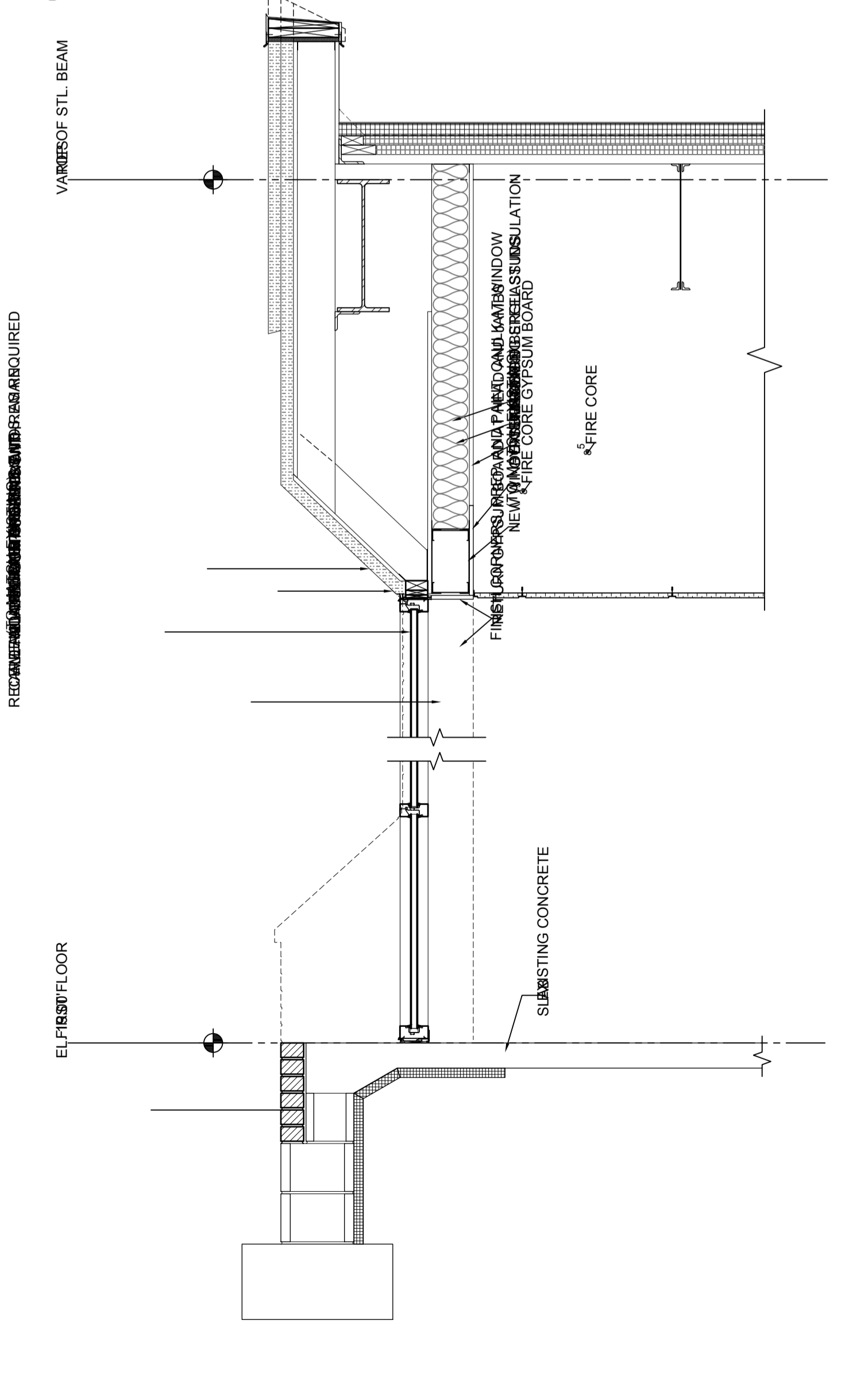
BASIS OF DESIGN: MCKEON DOOR COMPANY - CFS - SERIES



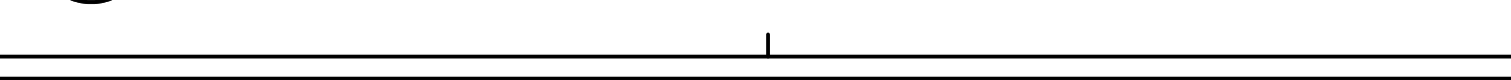
1 NEW ALUMINUM STOREFRONT WINDOW INFILL AT EXISTING OPENING SECTION
SCALE: 3/4\"/>



5 RELOCATED OVERHEAD ROLL-UP DOOR SECTION
SCALE: 3/4\"/>

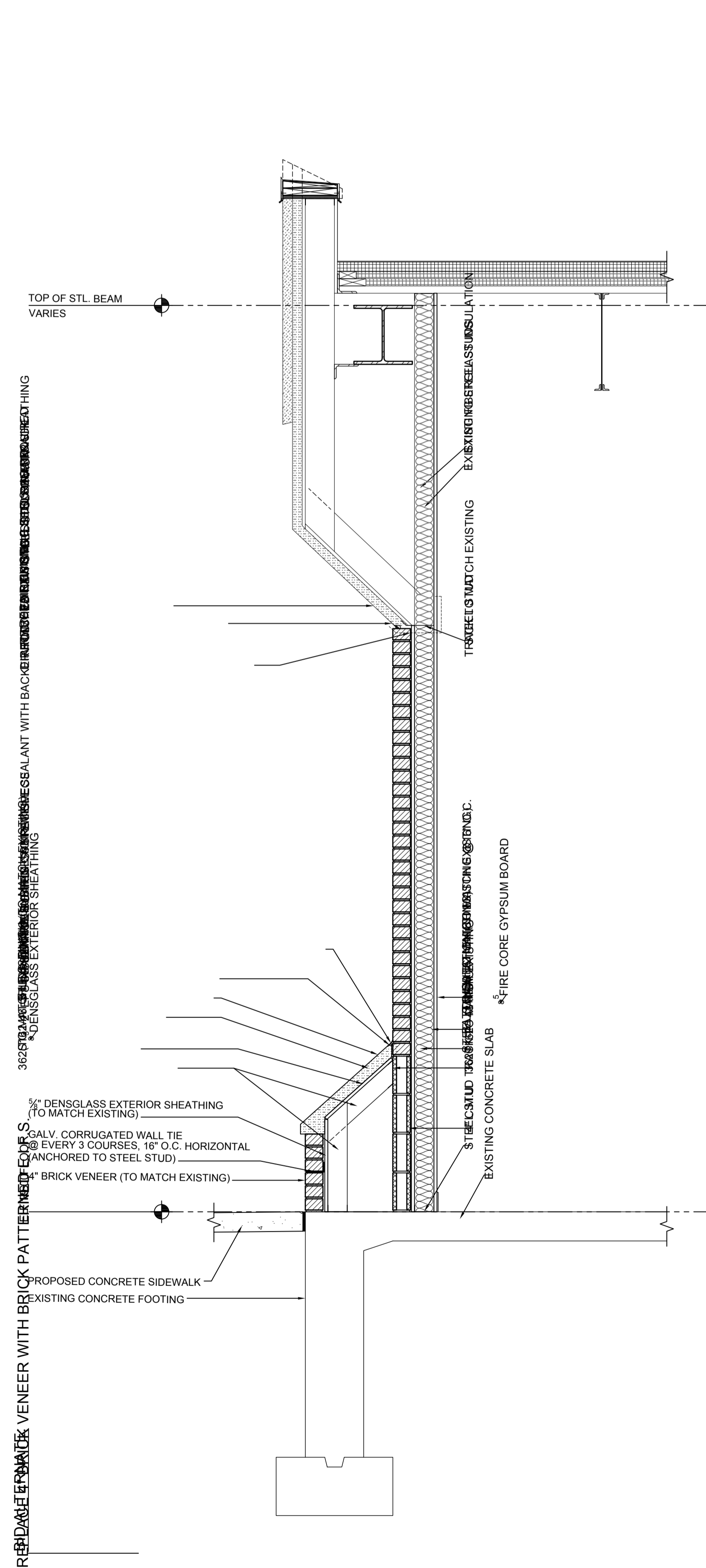


2 NEW ALUMINUM STOREFRONT IN EXISTING BRICK VENEER WALL
SCALE: 3/4\"/>

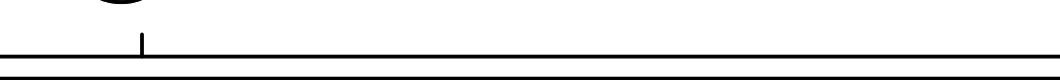


6 OVERHEAD ROLL-UP DOOR JAMP DETAIL
SCALE: 3/4\"/>

DESIGN BASED ON DRYVIT DETAIL DRAWINGS



3 WALL INFILL SECTION AT LOADING DOCK
SCALE: 3/4\"/>



| REVISIONS | | NO. | DATE | REMARKS |
|-----------|--|-----|------|---------|
| | | | | |
| | | | | |
| | | | | |
| | | | | |

I CERTIFY THAT THESE DRAWINGS WERE PREPARED BY ME OR UNDER MY CLOSE PERSONAL SUPERVISION AND THAT I AM A LICENSED PROFESSIONAL ARCHITECT IN THE STATE OF MARYLAND.

IOTT
ARCHITECTURE
ENGINEERING
INCORPORATED
310 HAMMOND ST. SUITE 109 SALISBURY, MARYLAND
(410) 749-7229 • FAX (410) 749-0001

TRI - COUNTY MULTI-PURPOSE CENTER
BUILDING ENVELOPE AND
INTERIOR RENOVATION
SALISBURY, MARYLAND

PRINT DATE: 11.12.2010
IOTT PROJ. NO.: 09-035
DESIGN BY: KI
DRAWN BY:
SCALE: AS NOTED
STAGE: ISSUED FOR BID
DWG. FILE: 09-035-A-501

A 501

WALL SECTIONS