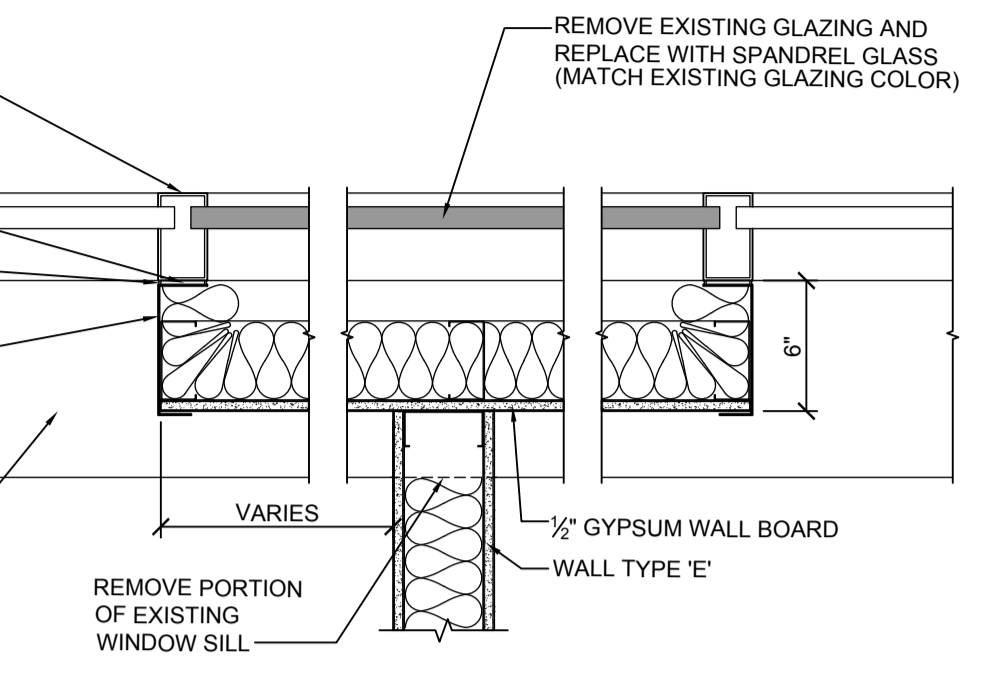
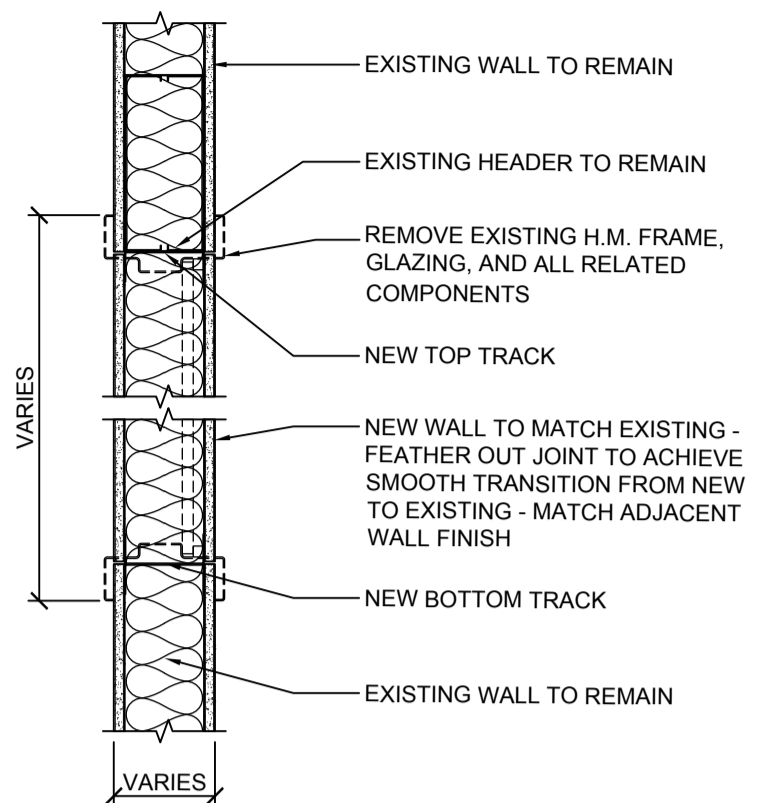


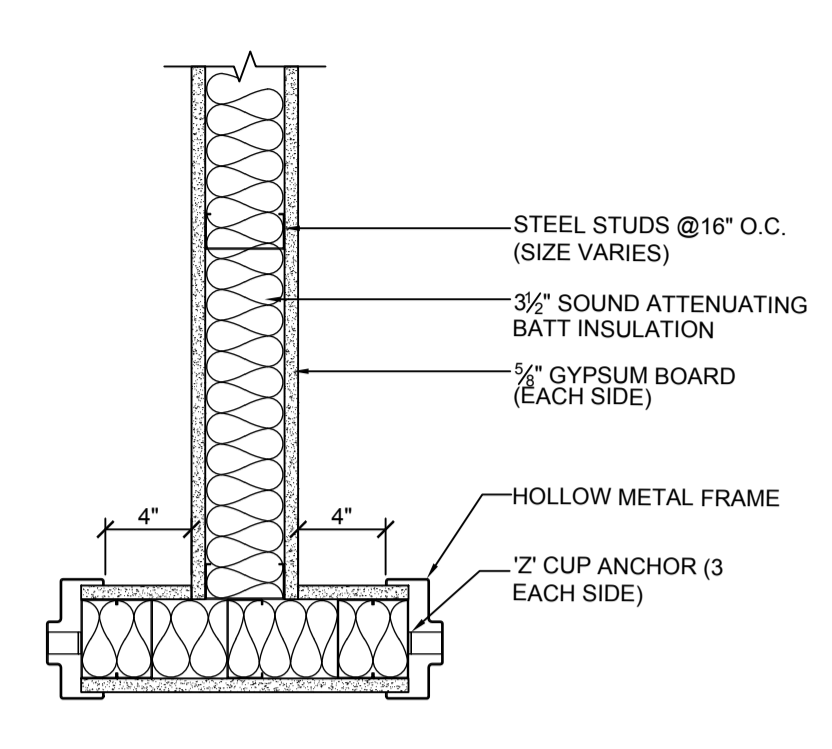
A WINDOW MULLION DETAIL
SCALE: 1 1/2" = 1'-0"



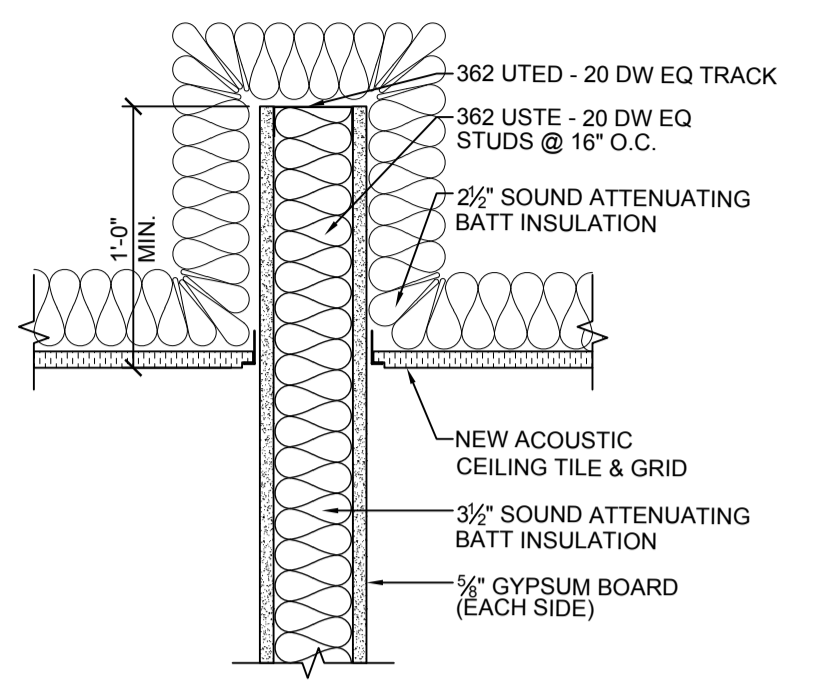
B WINDOW MULLION DETAIL
SCALE: 1 1/2" = 1'-0"



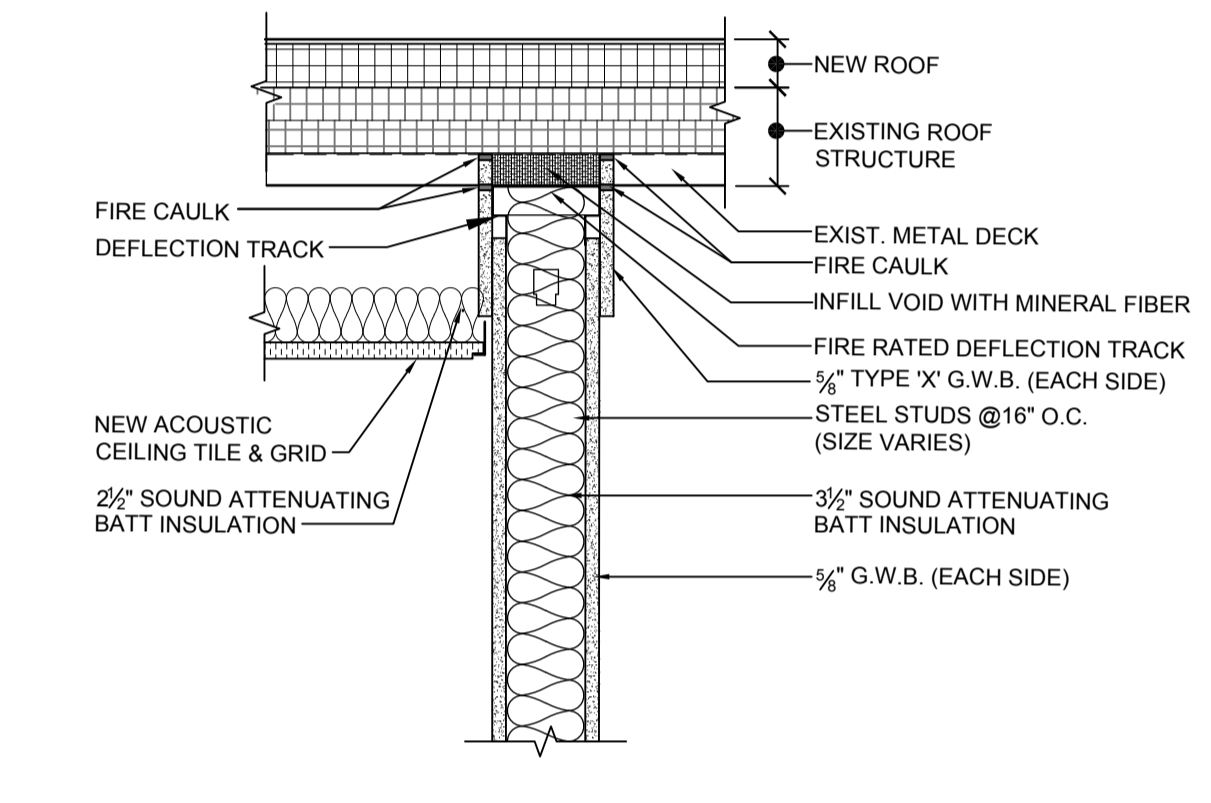
C WALL INFILL DETAIL
SCALE: 1 1/2" = 1'-0"



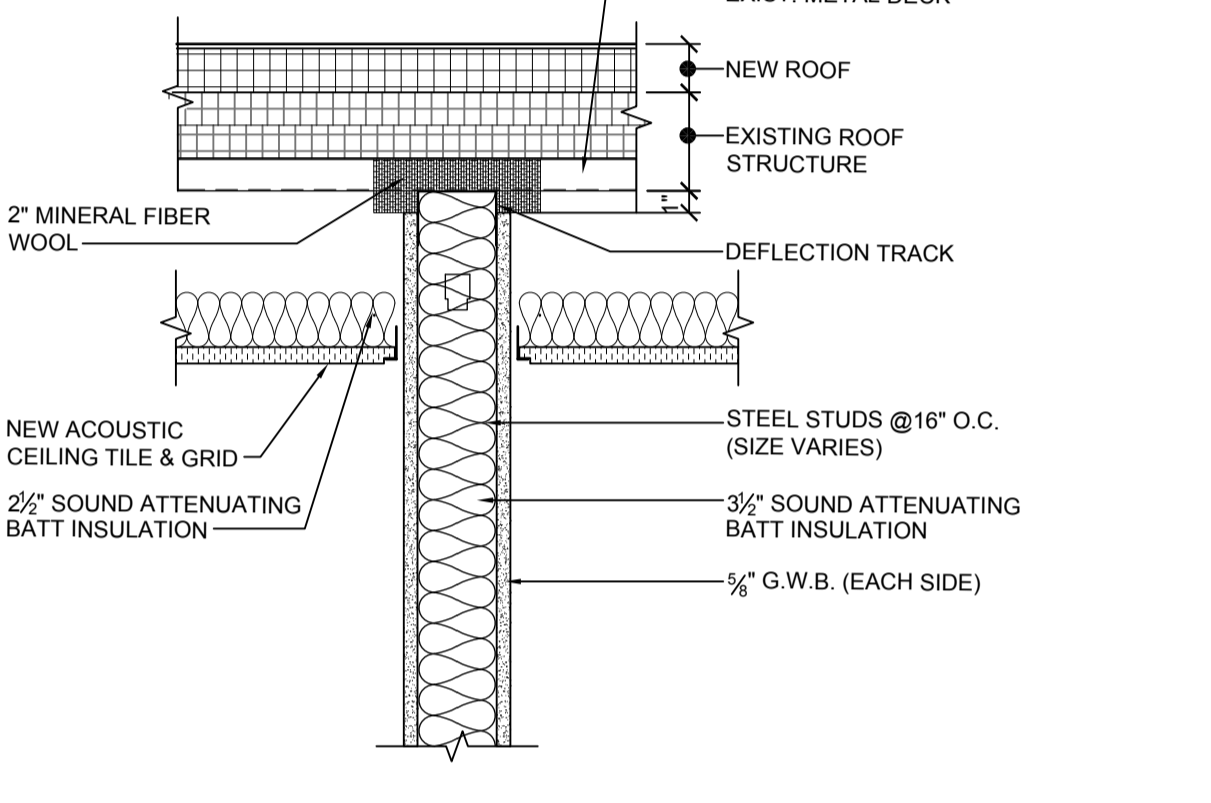
D JAMB DETAIL
SCALE: 1 1/2" = 1'-0"



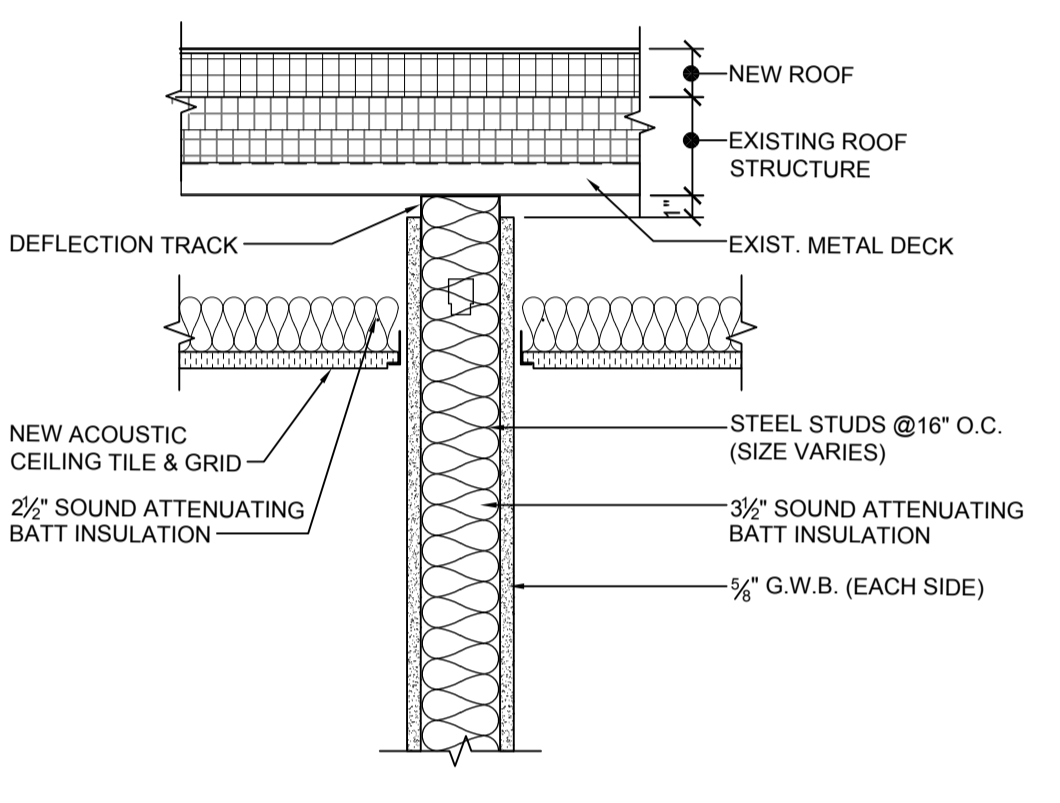
E TYPICAL OFFICE WALL DETAIL
SCALE: 1 1/2" = 1'-0"



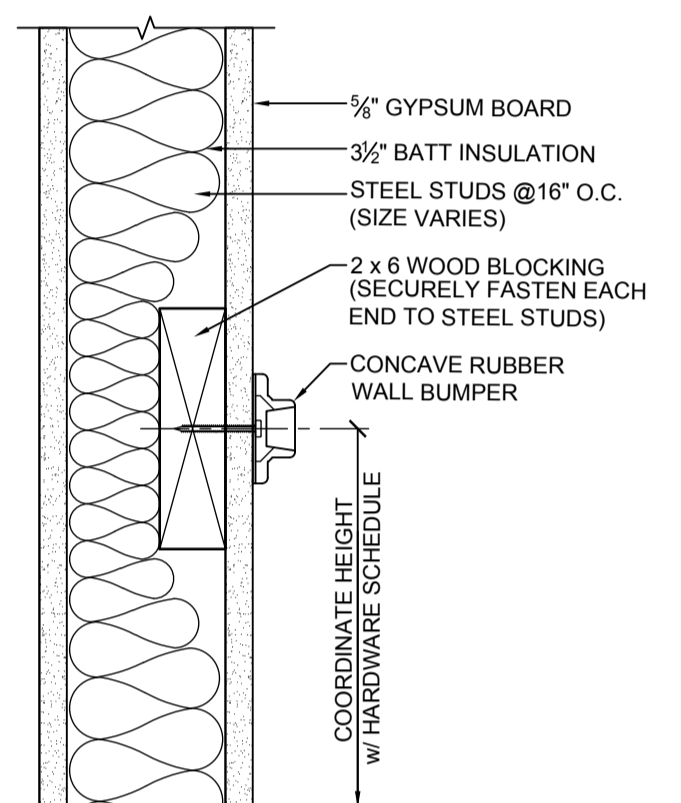
F RATED WALL DEFLECTION TRACK DETAIL
SCALE: 1 1/2" = 1'-0"



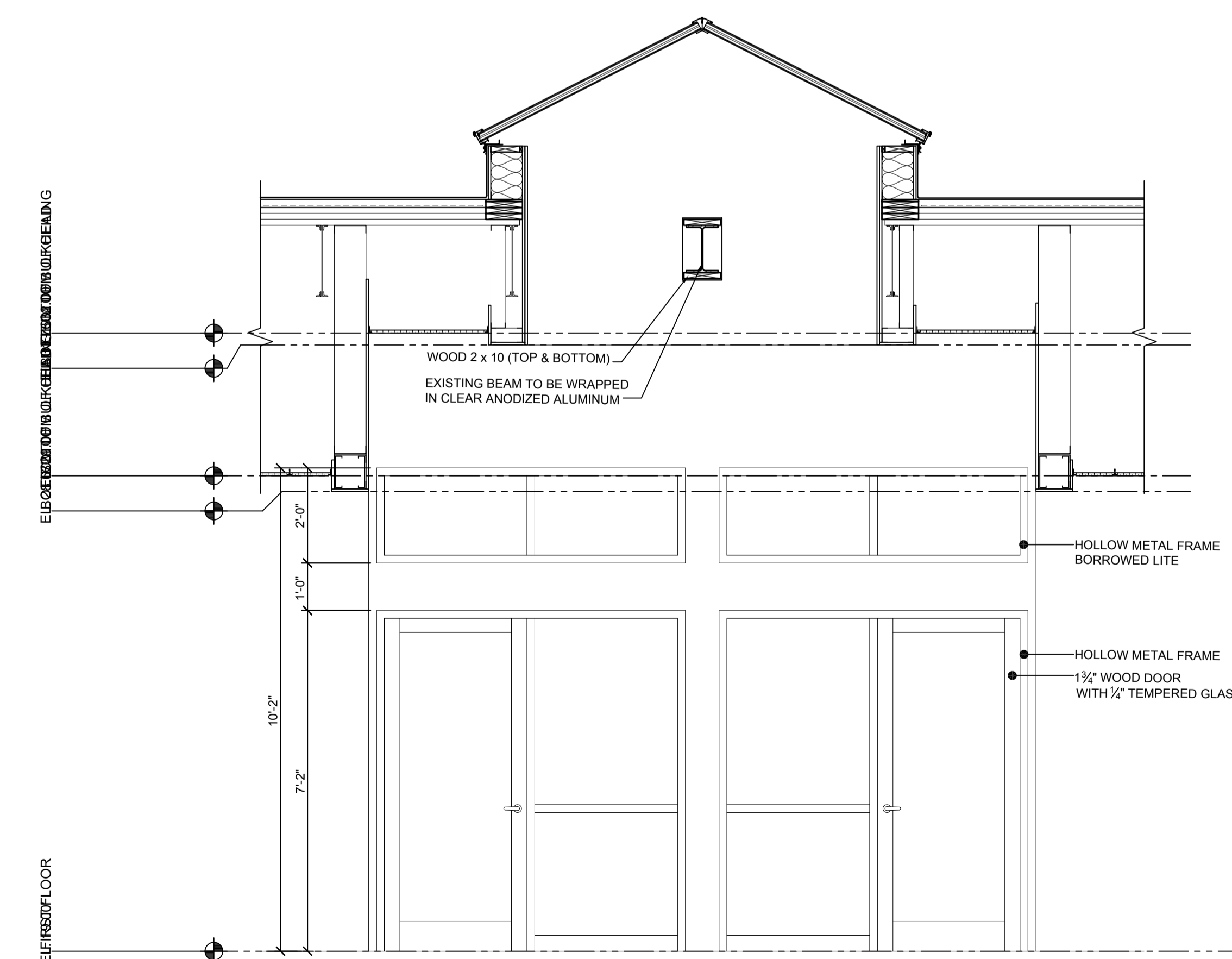
G SMOKE SEPARATION WALL DEFLECTION TRACK DETAIL
SCALE: 1 1/2" = 1'-0"



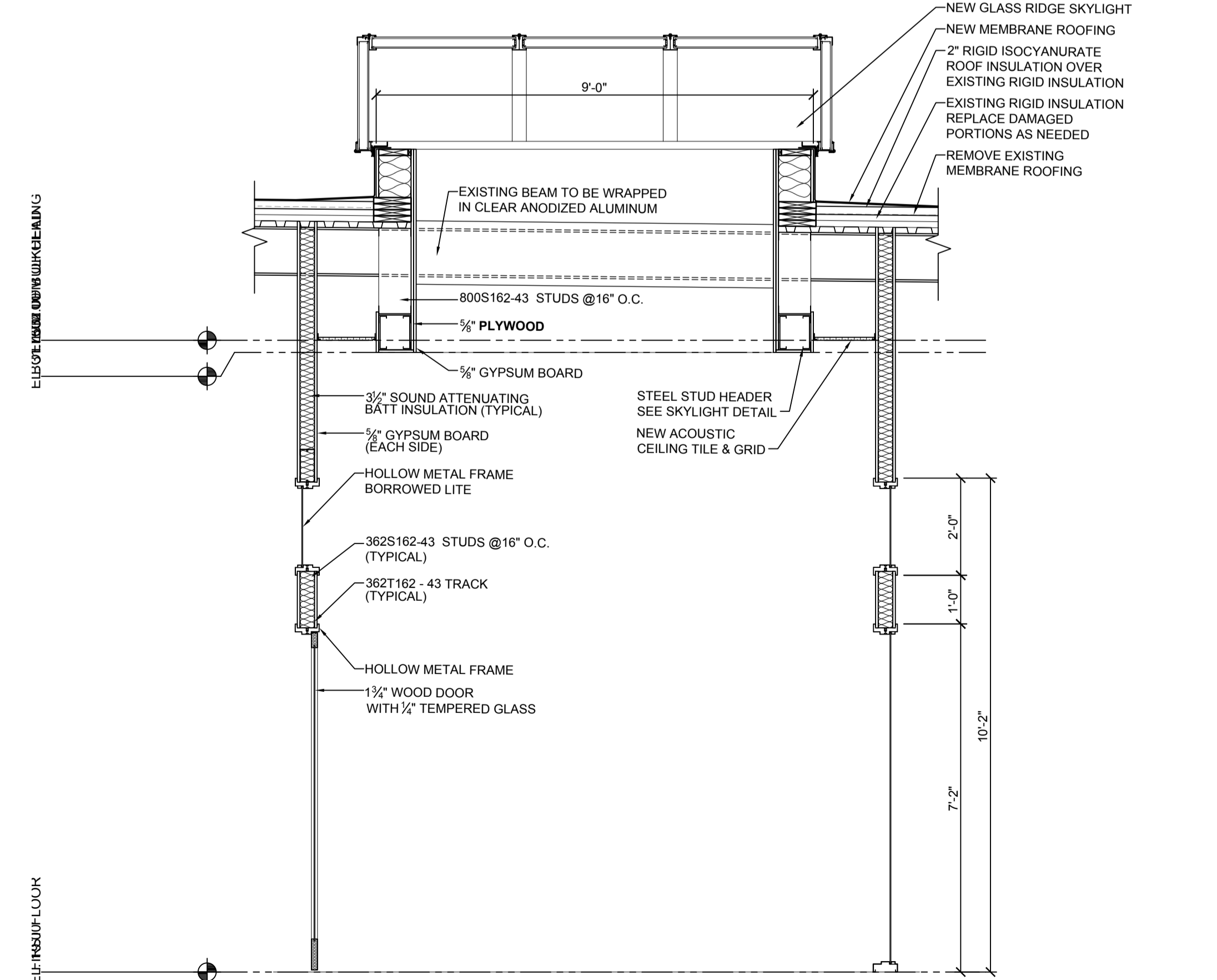
H DEFLECTION TRACK DETAIL
SCALE: 1 1/2" = 1'-0"



J WALL BUMPER DETAIL
SCALE: 3" = 1'-0"



1 NEW SKYLIGHT SECTION
SCALE: 1/2" = 1'-0"



2 NEW SKYLIGHT SECTION
SCALE: 1/2" = 1'-0"

REVISIONS		NO.	DATE	REMARKS

LEGIBILITY: PRINT THESE REVISIONS IN A CLEAR, APPROVED BY THE ARCHITECT FOR THE USER OF THE STATE OF MARYLAND
 WITH NOTATION NO. 0077
 EXPIRES DATE: 12/31/2010

ARCHITECTURE
 ENGINEERING
 INCORPORATED
IOTT
 310 HAMMOND ST. SUITE 100 SALISBURY, MARYLAND
 (410) 749-7229 • FAX (410) 749-0001

TRI - COUNTY MULTI-PURPOSE CENTER
 BUILDING ENVELOPE AND
 INTERIOR RENOVATION
 SALISBURY, MARYLAND
TYPICAL DETAILS

PRINT DATE: 11.1.2010
 IOTT PROJ. NO.: 09-035
 DESIGN BY: KI
 DRAWN BY:
 SCALE: AS NOTED
 STAGE: ISSUED FOR BID
 DWG. FILE: 09-035-A502

A
502