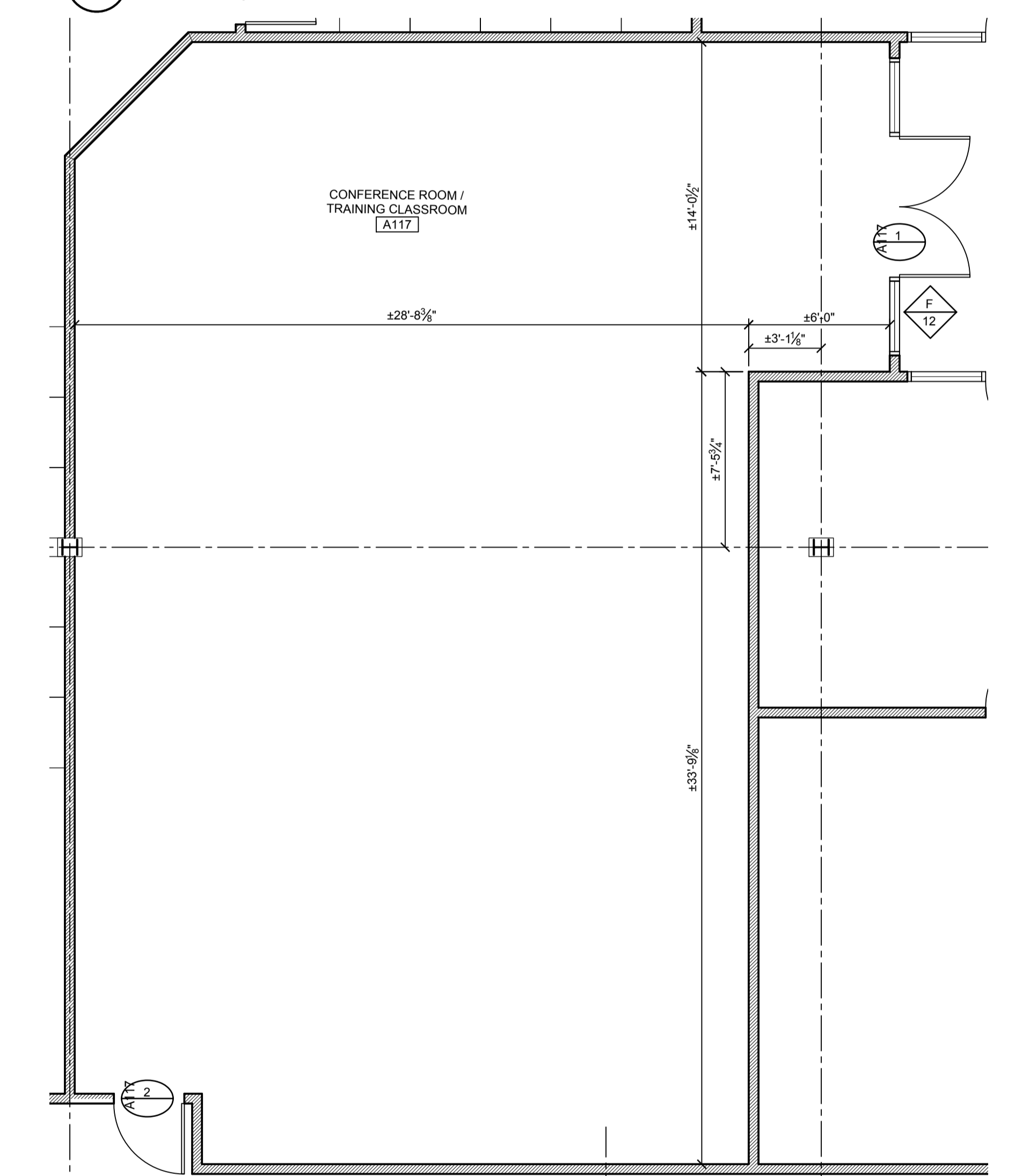
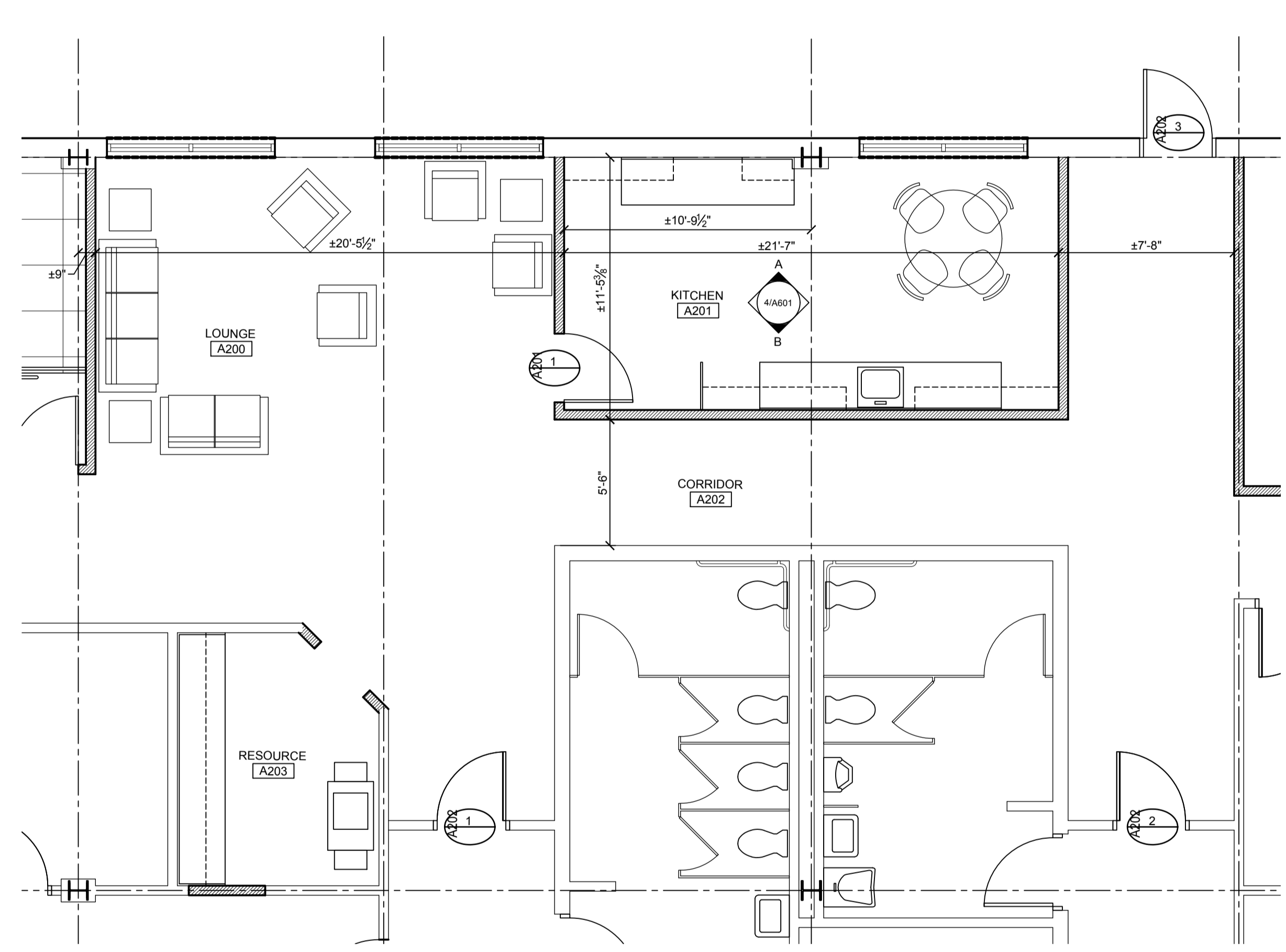


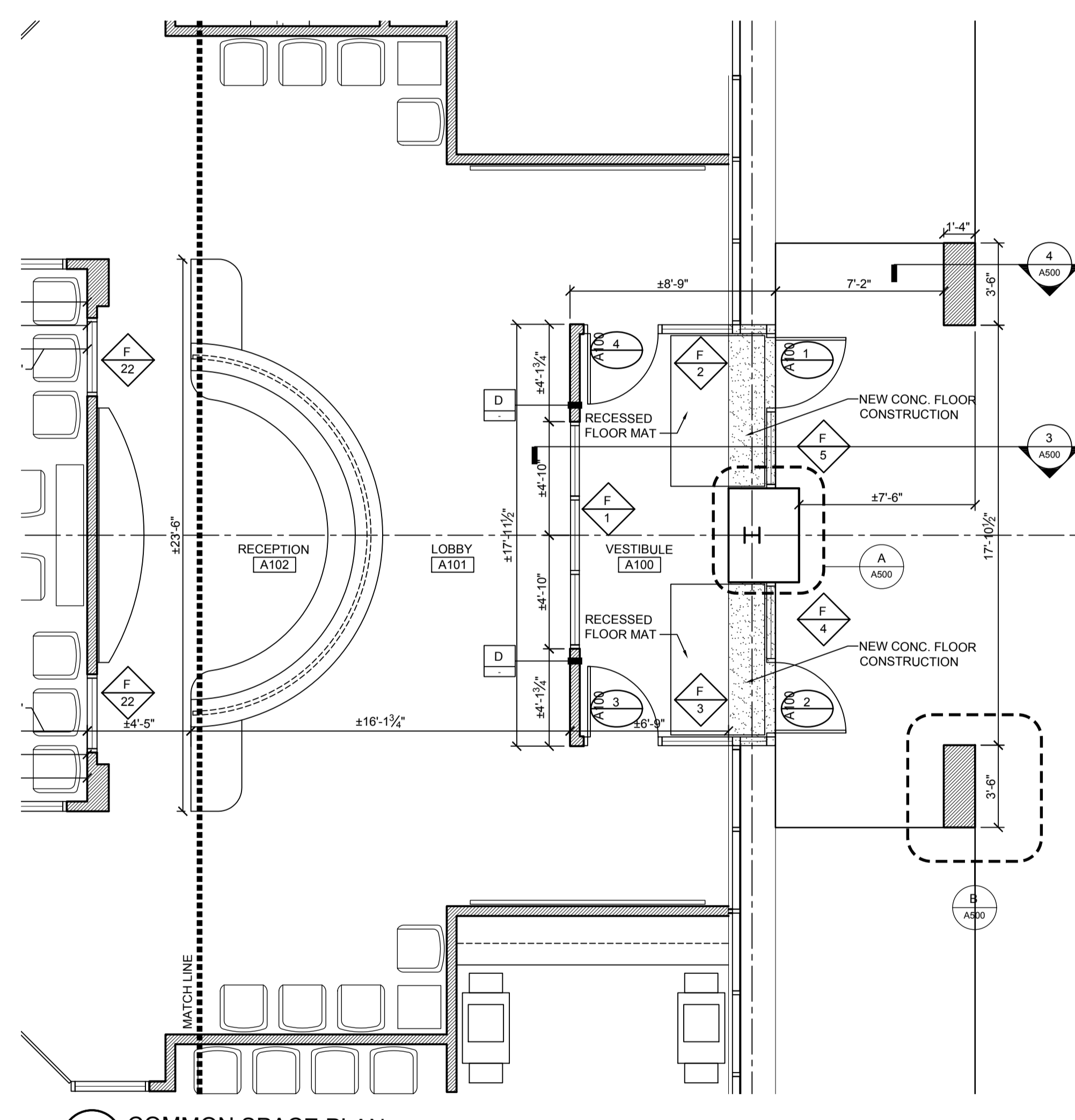
1 COMMON SPACE PLAN
SCALE: 1/4" = 1'-0"



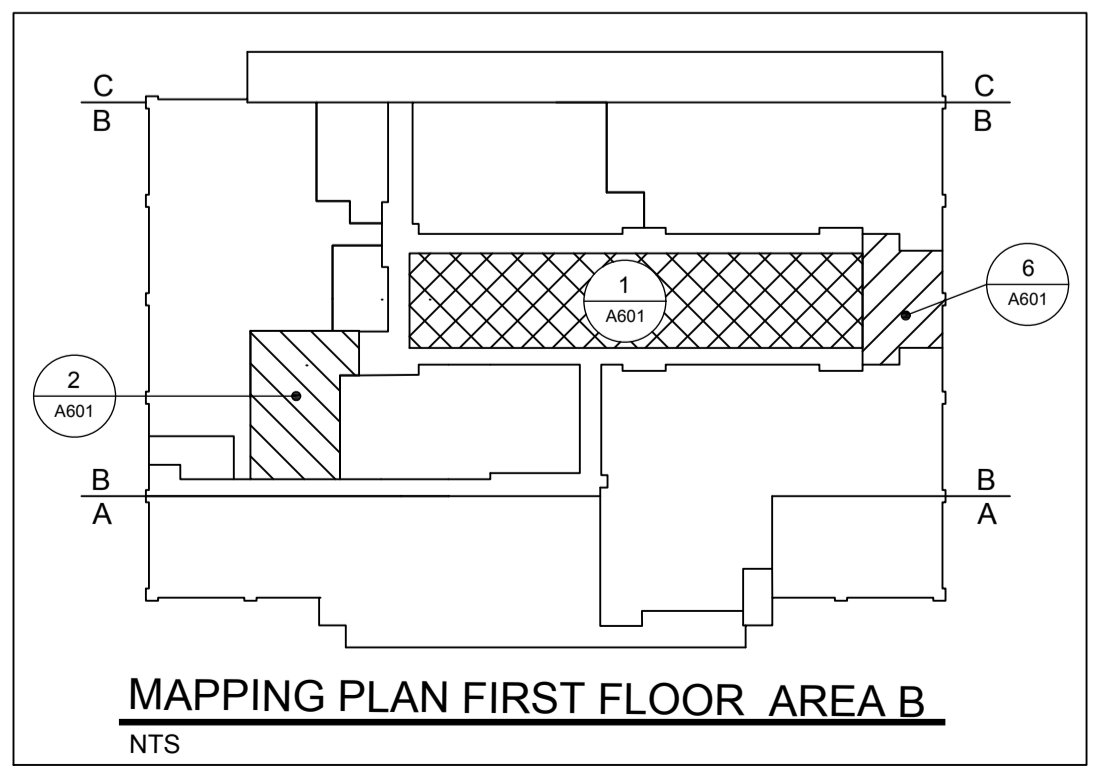
2 CONFERENCE ROOM / TRAINING CLASSROOM
SCALE: 1/4" = 1'-0"



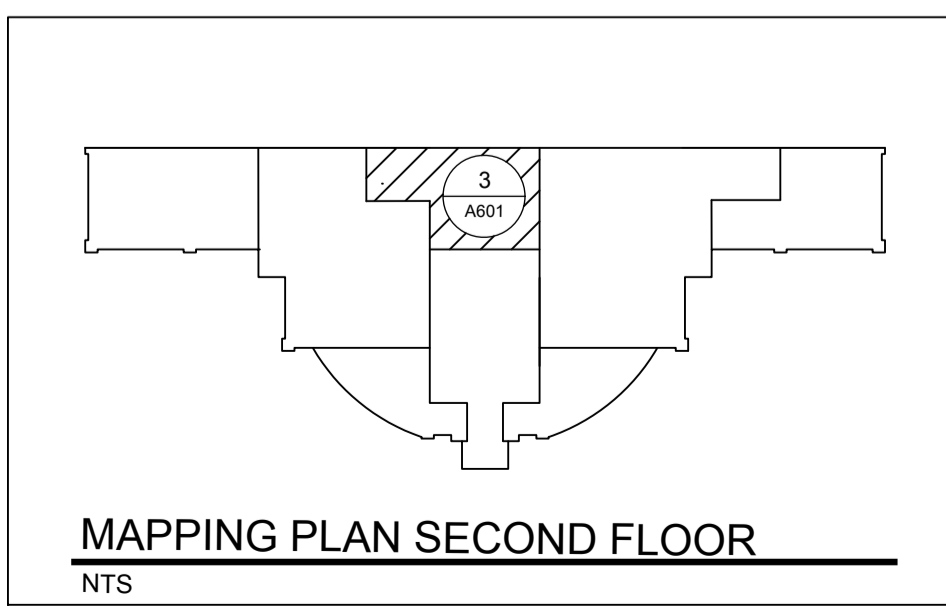
3 SECOND FLOOR COMMON SPACE PLAN
SCALE: 1/4" = 1'-0"



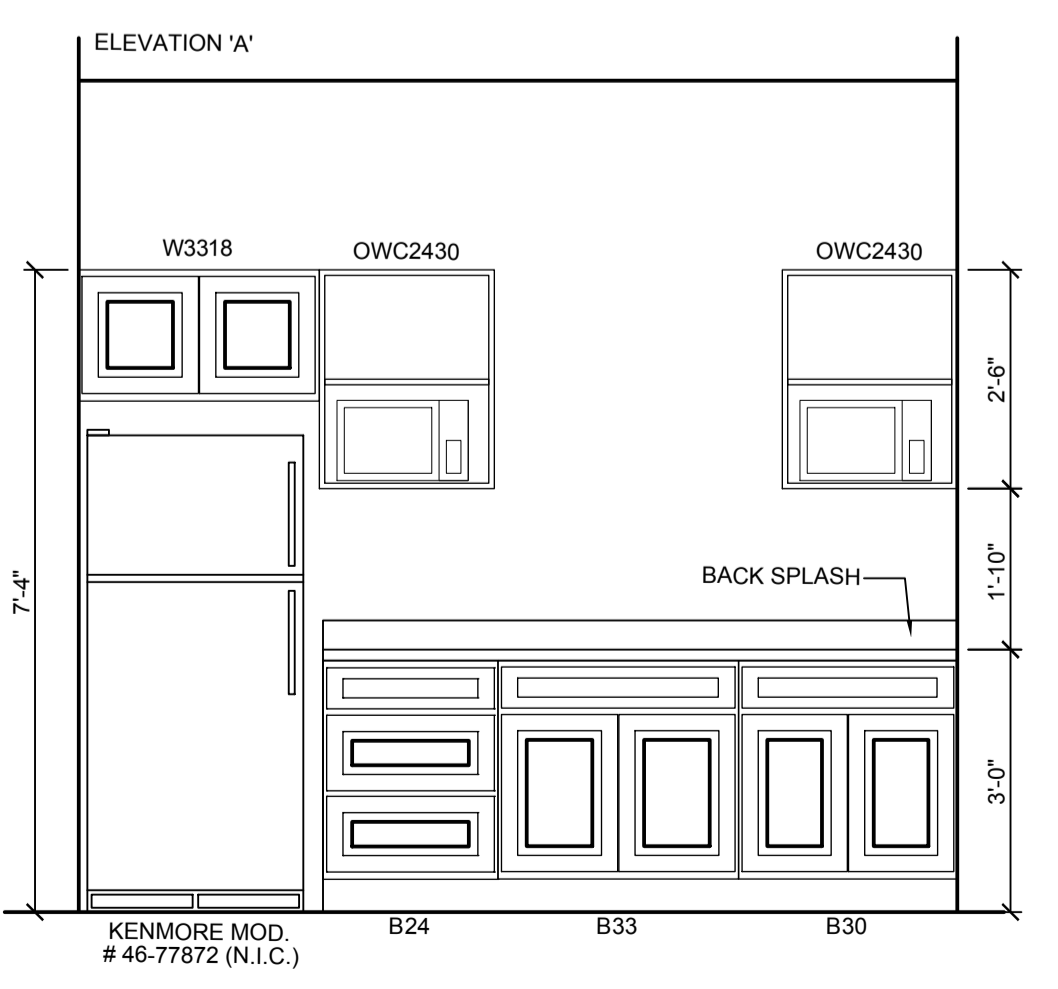
6 COMMON SPACE PLAN
SCALE: 1/4" = 1'-0"



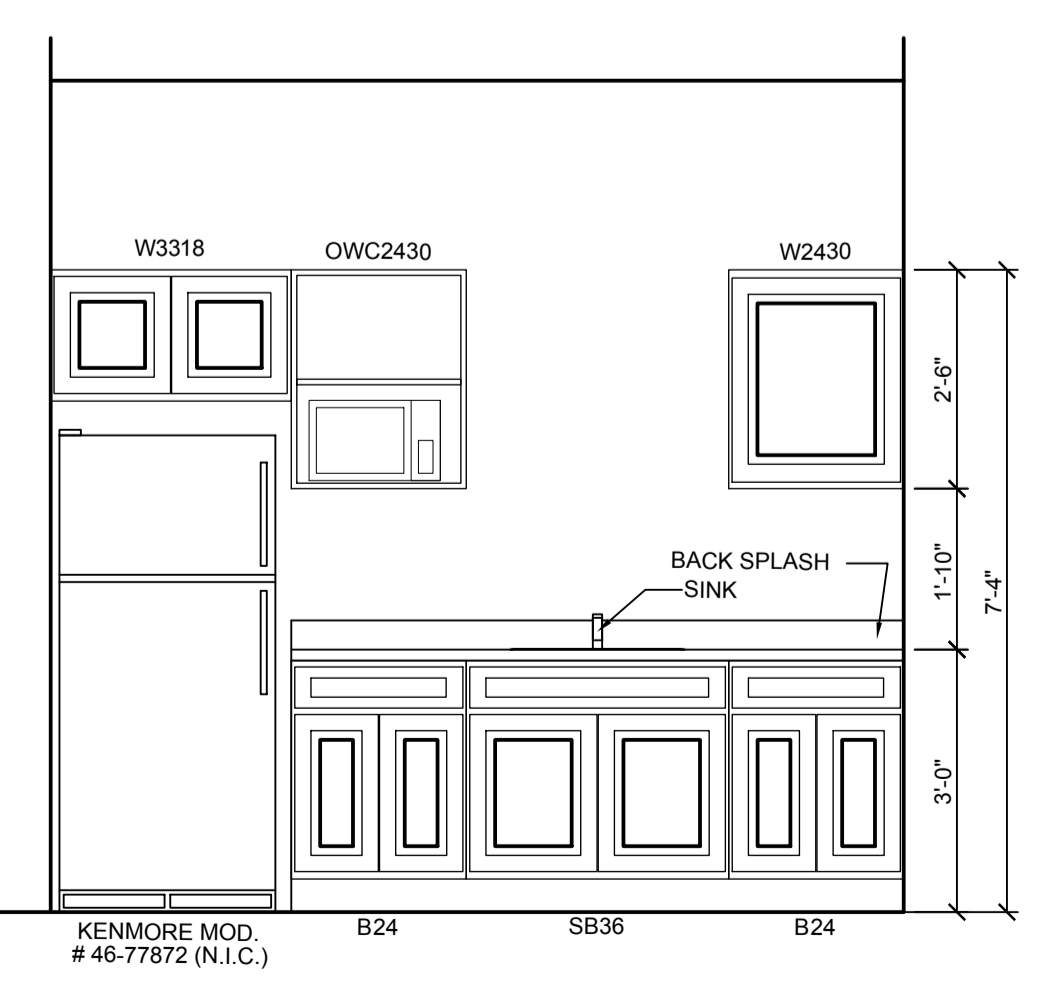
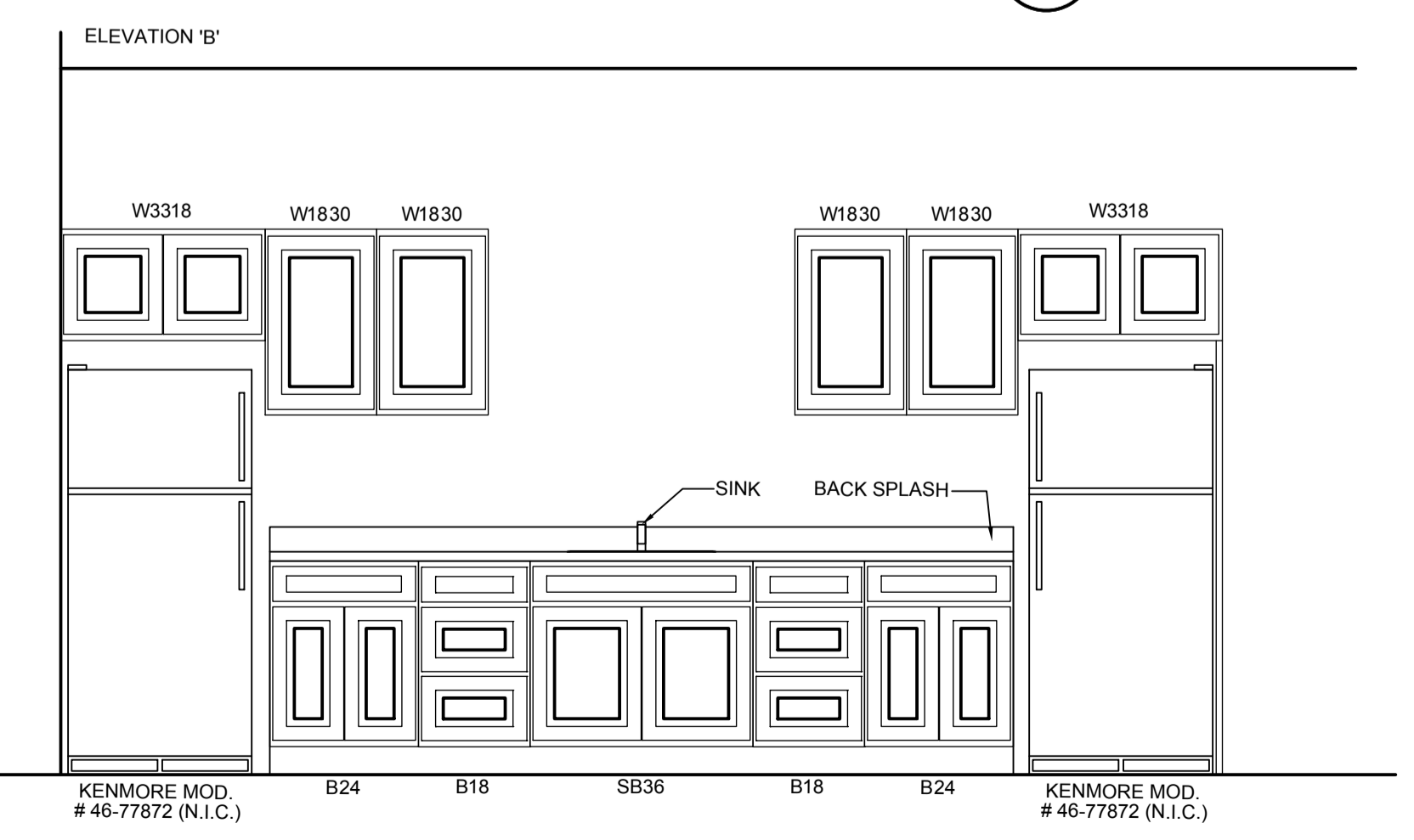
MAPPING PLAN FIRST FLOOR AREA B
NTS



MAPPING PLAN SECOND FLOOR
NTS



4 INTERIOR ELEVATION
SCALE: 1/2" = 1'-0"



5 INTERIOR ELEVATION
SCALE: 1/2" = 1'-0"

NO.	DATE	REVISIONS	REMARKS

LEGEND: THIS DRAWING IS THE PROPERTY OF IOTT ARCHITECTURE ENGINEERING INCORPORATED. IT IS TO BE USED ONLY FOR THE PROJECT AND SITE SPECIFICALLY IDENTIFIED HEREIN. ANY REUSE OR MODIFICATION WITHOUT THE WRITTEN CONSENT OF IOTT ARCHITECTURE ENGINEERING INCORPORATED IS STRICTLY PROHIBITED.

IOTT ARCHITECTURE ENGINEERING INCORPORATED
310 HAMMOND ST. SUITE 109 SALISBURY, MARYLAND
(410) 749-7229 • FAX (410) 749-0001

TRI - COUNTY MULTI-PURPOSE CENTER
BUILDING ENVELOPE AND
INTERIOR RENOVATION
SALISBURY, MARYLAND
COMMON SPACE PLANS

PRINT DATE: 11.1.2010
IOTT PROJ. NO.: 09-035
DESIGN BY: KI
DRAWN BY: E.J.W.
SCALE: AS NOTED
STAGE: ISSUED FOR BID
DWG. FILE: 09-035-A601

A 601