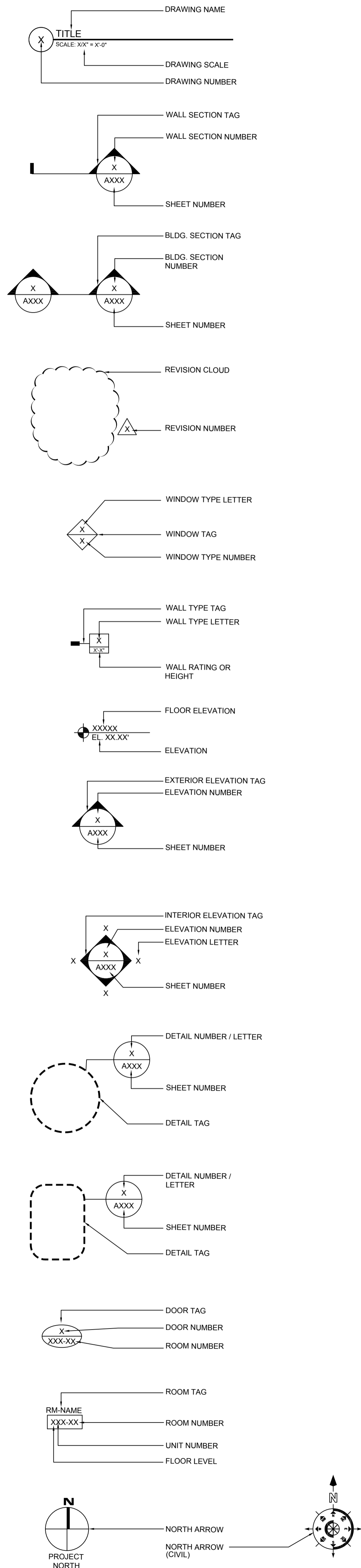


DRAWING SYMBOLS



PROJECT INFORMATION

BUILDING CODE ANALYSIS	
APPLICABLE BUILDING CODE	2006 INTERNATIONAL BUILDING CODE
CONSTRUCTION TYPE	TYPE 2B SPRINKLERED
BUILDING USE GROUP	B BUSINESS A ASSEMBLY (CAFETERIA)
ALLOWABLE AREA PER FLOOR	23,000 S.F.
200% S.F. INCREASE (IBC 508.3)	46,000 S.F.
TOTAL ALLOWABLE PER FLOOR	69,000 S.F.
DESIGN WIND SPEED	110 MPH (PER IBC 2006)
GROSS FLOOR AREAS	
FIRST FLOOR	60,996 S.F./100 = 607 OCCUPANTS
SECOND FLOOR	12,672 S.F./100 = 127 OCCUPANTS
NUMBER OF STORIES	2
ALLOWABLE NUMBER OF STORIES	5
ACTUAL NUMBER OF STORIES	2 STORIES
FIRE RESISTIVE ELEMENTS	
STAIR ENCLOSURES	TWO HOUR
EXIT ACCESS CORRIDORS	N/A
FLOOR CONSTRUCTION	N/A
ROOF CONSTRUCTION	N/A
EXTERIOR WALL CONSTRUCTION	N/A
TENANT SEPARATION	N/A

GENERAL NOTES

A. CONTRACTOR SHALL VERIFY ALL CONDITIONS PRIOR TO CONSTRUCTION.

B. ANY ITEM WHICH IS NOT EXPRESSLY SHOWN BUT WHICH IS REASONABLY UNDERSTOOD TO BE REQUIRED FOR THE PROPOSED WORK SHALL BE ACCOUNTED FOR IN THE BID AND PROVIDED BY THE APPROPRIATE SUBCONTRACTOR OR SUPPLIER.

C. CONTRACTOR SHALL STORE, TRANSPORT AND DISPOSE OF DEMOLITION AND CONSTRUCTION DEBRIS IN STRICT ACCORDANCE WITH ALL MUNICIPAL, COUNTY, STATE AND FEDERAL CODES AND REGULATIONS.

D. THESE DRAWINGS ARE NOT PRESENTED AS FULL SERVICE DRAWINGS. THEY ARE PROVIDED TO ASSIST THE OWNER OR CONTRACTOR OBTAIN ALL REQUIRED PERMITS AND APPROVALS PRIOR TO CONSTRUCTION.

E. IN THE EVENT THAT ADDITIONAL INFORMATION IS REQUIRED FOR BIDDING OR CONSTRUCTION CONTACT THE ARCHITECT IN A TIMELY MANNER SO AS NOT TO ADVERSELY AFFECT THE PROSECUTION OF THE WORK.

F. CONTRACTOR SHALL BE RESPONSIBLE FOR CONSTRUCTION MEANS, METHODS, TECHNIQUES AND PROCEDURES AND FOR ALL SAFETY PRECAUTIONS AS THEY RELATE TO THIS PROJECT.

G. THE CONTRACTOR SHALL SECURE ALL PERMITS, APPROVALS AND INSPECTIONS FOR THIS PROJECT AS REQUIRED BY MUNICIPAL, COUNTY OR STATE REGULATIONS OR REQUIREMENTS.

H. CONSTRUCTION PERSONNEL SHALL PARK IN DESIGNATED AREAS.

I. THE SITE SHALL BE MAINTAINED IN CLEAN CONDITION DURING CONSTRUCTION. DEBRIS SHALL NOT BE STORED ON SITE. MATERIALS SHALL BE STORED OR STAGED IN AREAS DESIGNATED BY OWNER.

J. THE CONTRACTOR SHALL COORDINATE WITH OWNER AND MAKE NECESSARY ACCOMMODATIONS FOR COMPONENTS PROVIDED BY OWNER OR HIS SUBCONTRACTOR.

L. OPENINGS AND PENETRATIONS IN FIRE-RATED ASSEMBLIES SHALL BE FIRESTOPPED IN ACCORDANCE WITH APPLICABLE CODES AND ASSEMBLIES NOTED.

M. FIRE-RATED ASSEMBLIES SHALL BE CONSTRUCTED IN STRICT COMPLIANCE WITH THE DESIGNATED FIRE-RATED DESIGN.

PORTABLE FIRE EXTINGUISHERS

PROVIDE THROUGHOUT THIS PROJECT, PORTABLE FIRE EXTINGUISHERS WHERE INDICATED ON THE PLANS AND/OR AS SHALL BE REQUIRED BY THE AUTHORITY HAVING JURISDICTION (FIRE MARSHAL). THE EXTINGUISHERS AND PLACEMENT THEREOF SHALL COMPLY WITH THE REQUIREMENTS OF NFPA 10 - "STANDARD FOR PORTABLE FIRE EXTINGUISHERS". MAXIMUM MOUNTING HEIGHT TO TOP OF FIRE EXTINGUISHER SHALL BE SIXTY (60) INCHES ABOVE FINISHED FLOOR. MINIMUM TYPE FIRE EXTINGUISHER (UL RATED = 4A-60B:C (10 lbs. NOMINAL CAPACITY)

SPRINKLER NOTE

THIS STRUCTURE SHALL BE PROVIDED WITH AND PROTECTED BY A COMPLETE AUTOMATIC SPRINKLER SYSTEM. DESIGNED AND INSTALLED IN ACCORDANCE WITH THE REQUIREMENTS OF THE MOST RECENT EDITION OF THE NATIONAL FIRE PROTECTION ASSOCIATION (NFPA) NATIONAL FIRE CODE, NFPA 13 - "STANDARD FOR THE INSTALLATION OF SPRINKLER SYSTEMS". THE SYSTEM SHALL BE INSTALLED IN ACCORDANCE WITH ACCEPTED ENGINEERING PRACTICES AND PLANS AS APPROVED BY THE AUTHORITY HAVING JURISDICTION

PROJECT DESCRIPTION

DEVELOPER
TRI-COUNTY COUNCIL
3109 COMTEK LANE
SALISBURY, STATE ZIP
PHONE: 410-632-4700

PROPERTY DESCRIPTION
DEED REF. 3115 / 556
PARCEL 266 TAX MAP 39
SALISBURY, MARYLAND
WICOMICO COUNTY, MARYLAND

ZONING
LB-1 LIGHT BUSINESS & INSTITUTIONAL

DRAWING LISTS

LIST OF DRAWINGS	ISSUE DATE	REV. DATE
CS1 COVER SHEET	11.01.2010	
CS2 DRAWING LISTS AND SYMBOLS	11.01.2010	
CIVIL - BY OTHERS		
ARCHITECTURAL		
D101 PARTIAL DEMOLITION PLAN 1ST FLOOR	11.01.2010	
D102 PARTIAL DEMOLITION PLAN 1ST FLOOR	11.01.2010	
D103 PARTIAL DEMOLITION PLAN 1ST FLOOR	11.01.2010	
D104 SECOND FLOOR DEMOLITION PLAN	11.01.2010	
D105 OVERALL EXISTING ROOF DEMO PLAN	11.01.2010	
D300 EXTERIOR ELEVATION DEMOLITION	11.01.2010	
A001 LIFE SAFETY PLAN	11.01.2010	
A100 OVERALL FLOOR PLANS	11.01.2010	
A101 PARTIAL FIRST FLOOR PLAN	11.01.2010	
A102 PARTIAL FIRST FLOOR PLAN	11.01.2010	
A103 PARTIAL FIRST FLOOR PLAN	11.01.2010	
A104 SECOND FLOOR PLAN	11.01.2010	
A105 OVERALL PROPOSED ROOF PLAN	11.01.2010	
A200 PARTIAL FIRST FLOOR REFLECTED CEILING PLAN	11.01.2010	
A201 PARTIAL FIRST FLOOR REFLECTED CEILING PLAN	11.01.2010	
A202 PARTIAL FIRST FLOOR REFLECTED CEILING PLAN	11.01.2010	
A203 SECOND FLOOR REFLECTED CEILING PLAN	11.01.2010	
A300 EXTERIOR ELEVATIONS	11.01.2010	
A301 PROPOSED NORTH 2ND FLOOR ELEVATION AND PLAN	11.01.2010	
A302 PROPOSED PARTIAL ELEVATION	11.01.2010	
A500 WALL SECTIONS	11.01.2010	
A501 WALL SECTIONS AND TYPICAL DETAILS	11.01.2010	
A502 TYPICAL DETAILS	11.01.2010	
A503 EXISTING WALL SECTIONS & DETAILS	11.01.2010	
A504 WALL SECTION AND DETAILS	11.01.2010	
A505 TYPICAL ROOF DETAILS	11.01.2010	
A600 WALL TYPES AND LARGE SCALE TOILET LAYOUT	11.01.2010	
A601 COMMON SPACE PLAN	11.01.2010	
A602 DLLR SPACE PLAN	11.01.2010	
A603 LSWA, CRL, UI, AND FOCUS SPACE PLANS	11.01.2010	
A604 WOR-WIC SPACE PLAN	11.01.2010	
A605 TELAMON SPACE PLAN	11.01.2010	
A606 SOCIAL SERVICES SPACE PLAN	11.01.2010	
A607 TCC SPACE PLAN	11.01.2010	
A608 LSWA AND SHORE TRANSIT SPACE PLAN	11.01.2010	
A609 DSS - CSEA SPACE PLAN	11.01.2010	
A800 STAIR SECTION	11.01.2010	
A900 ROOM FINISH SCHEDULE	11.01.2010	
A901 DOOR SCHEDULE	11.01.2010	
A902 DOOR FRAME AND WINDOW FRAME SCHEDULE	11.01.2010	

LIST OF DRAWINGS	ISSUE DATE	REV. DATE
MECHANICAL		
M001 MECHANICAL LEGENDS, SCHEDULES AND DETAILS	11.01.2010	
M002 ATC CONTROL SEQUENCES	11.01.2010	
M100 FIRST FLOOR PLAN -MECHANICAL-DEMOLITION	11.01.2010	
M101 FIRST FLOOR PLAN -MECHANICAL-DEMOLITION	11.01.2010	
M102 SECOND FLOOR PLAN -MECHANICAL-DEMOLITION	11.01.2010	
M200 ROOF PLAN -MECHANICAL-DEMOLITION	11.01.2010	
M104 ROOF PLAN -MECHANICAL-DEMOLITION	11.01.2010	
M200 FIRST FLOOR PLAN -MECHANICAL-NEW WORK	11.01.2010	
M201 FIRST FLOOR PLAN -MECHANICAL-NEW WORK	11.01.2010	
M202 SECOND FLOOR PLAN -MECHANICAL-NEW WORK	11.01.2010	
M203 FIRST FLOOR PLAN -MECHANICAL-NEW WORK	11.01.2010	
M204 FIRST FLOOR PLAN -MECHANICAL-NEW WORK	11.01.2010	
M205 SECOND FLOOR PLAN -MECHANICAL-NEW WORK	11.01.2010	
M206 ROOF PLAN -MECHANICAL-NEW WORK	11.01.2010	
M207 ROOF PLAN -MECHANICAL-NEW WORK	11.01.2010	
M500 MECHANICAL DETAILS	11.01.2010	
PLUMBING		
P100 FOUNDATION PLAN-PLUMBING-DEMOLITION	11.01.2010	
P101 FOUNDATION PLAN-PLUMBING-DEMOLITION	11.01.2010	
P102 FIRST FLOOR PLAN-PLUMBING-DEMOLITION	11.01.2010	
P103 FIRST FLOOR PLAN-PLUMBING-DEMOLITION	11.01.2010	
P104 SECOND FLOOR PLAN-PLUMBING-DEMOLITION	11.01.2010	
P200 FOUNDATION PLAN-PLUMBING-NEW WORK	11.01.2010	
P201 FOUNDATION PLAN-PLUMBING-NEW WORK	11.01.2010	
P202 FIRST FLOOR PLAN-PLUMBING-NEW WORK	11.01.2010	
P203 FIRST FLOOR PLAN-PLUMBING-NEW WORK	11.01.2010	
P400 PART PLAN-PLUMBING-NEW WORK	11.01.2010	
P500 SANITARY RISER DIAGRAM	11.01.2010	
P501 PLUMBING DETAILS	11.01.2010	
ELECTRICAL		
E001 ELECTRICAL SCHEDULES AND LEGEND	11.01.2010	
E002 ELECTRICAL SCHEDULES	11.01.2010	
E003 ELECTRICAL SCHEDULES	11.01.2010	
E004 ELECTRICAL SCHEDULES	11.01.2010	
E100 FIRST FLOOR PLAN - LIGHTING DEMOLITION	11.01.2010	
E101 FIRST FLOOR PLAN - LIGHTING DEMOLITION	11.01.2010	
E102 SECOND FLOOR PLAN - LIGHTING DEMOLITION	11.01.2010	
E103 FIRST FLOOR PLAN-POWER AND SPECIAL SYSTEMS DEMOLITION	11.01.2010	
E104 FIRST FLOOR PLAN-POWER AND SPECIAL SYSTEMS DEMOLITION	11.01.2010	
E105 2ND FLOOR PLAN-POWER AND SPECIAL SYSTEMS DEMOLITION	11.01.2010	
E106 ROOF PLAN-POWER DEMOLITION	11.01.2010	
E200 FIRST FLOOR PLAN - LIGHTING	11.01.2010	
E201 FIRST FLOOR PLAN - LIGHTING	11.01.2010	
E202 SECOND FLOOR PLAN - LIGHTING	11.01.2010	
E300 FIRST FLOOR PLAN - POWER	11.01.2010	
E301 FIRST FLOOR PLAN - POWER	11.01.2010	
E302 SECOND FLOOR PLAN - POWER	11.01.2010	
E303 MECHANICAL EQUIPMENT CONNECTIONS	11.01.2010	
E304 PART PLANS - ELECTRICAL	11.01.2010	
E400 FIRST FLOOR PLAN - FIRE ALARM	11.01.2010	
E401 FIRST FLOOR PLAN - FIRE ALARM	11.01.2010	
E402 SECOND FLOOR PLAN - FIRE ALARM	11.01.2010	
E500 EXISTINGDEMOLITION POWER DISTRIBUTION RISER DIAGRAMS	11.01.2010	
E501 ELECTRICAL DIAGRAMS AND DETAILS	11.01.2010	
E502 ELECTRICAL DIAGRAMS AND DETAILS	11.01.2010	

LIST OF REVISIONS			
NO.	DATE	REMARKS	SHEETS
1	MM/DD/2006	X	X

REVISIONS
 NO. DATE REMARKS
 NO. DATE REMARKS

IOTI ARCHITECTURE ENGINEERING INCORPORATED
 310 HAMMOND ST. SUITE 100 SALISBURY, MARYLAND
 (410) 794-7229 • FAX (410) 794-0901

TRI - COUNTY MULTI-PURPOSE CENTRAL BUILDING ENVELOPE AND INTERIOR RENOVATION SALISBURY, MARYLAND
 DRAWING LIST, SYMBOLS AND PROJECT INFORMATION

PRINT DATE: 11.1.2010
 IOTI PROJ. NO.: 09-035
 DESIGN BY: KI
 DRAWN BY: JT
 SCALE: NO SCALE
 STAGE: ISSUED FOR BID
 DWG. FILE: 09-035-CS2

CS 2