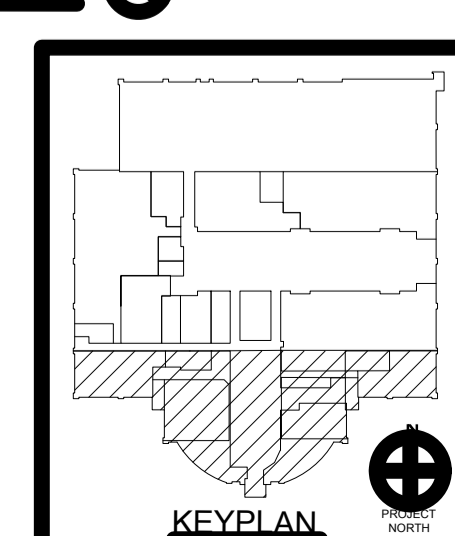
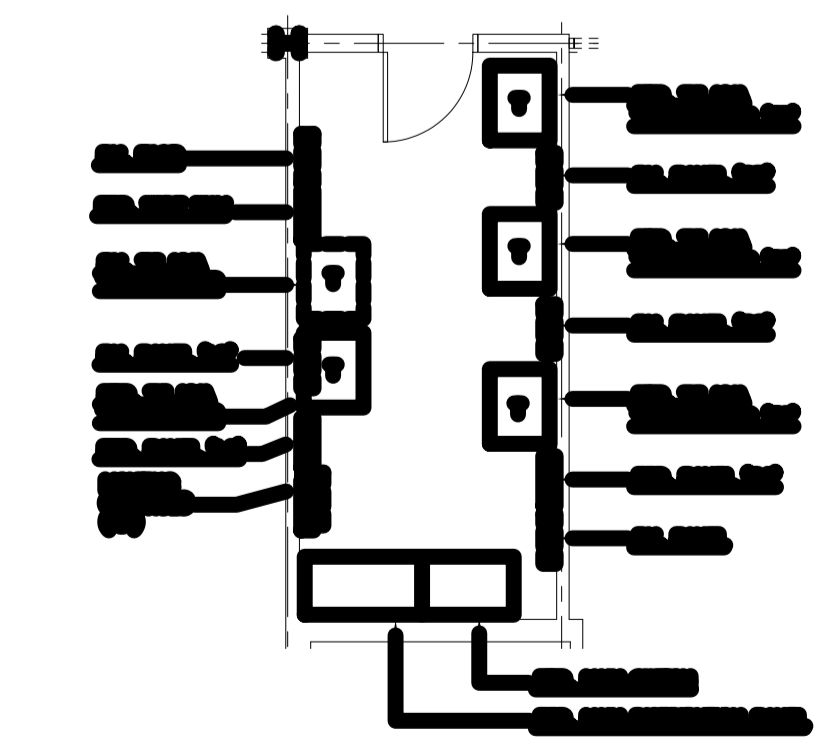


DO NOT SCALE. ALL DIMENSIONS SHALL BEVERN APPROXIMATE. THIS PLAN IS FOR INFORMATION ONLY. ANY DIMENSIONS SHOWN ON THIS PLAN SHALL BEVERN APPROXIMATE.

1 FIRST FLOOR PLAN - POWER AND SIGNAL CABLE ROUTING

2 EAST ELEVATION - ROOF RISE ROOM



Project information block including title 'TRI-COUNTY COUNCIL REGIONAL CENTER ROUTE 50, EAST SALISBURY, MARYLAND', IOTT logo, and revision table.

NO.	DATE	DESCRIPTION	BY	CHK
1		ISSUED FOR PERMIT		
2		REVISIONS		

SCHEMBERG, P.L.L.C. ARCHITECTURE, ENGINEERING & CONSULTING ENGINEERS, INCORPORATED. 310 HARMONSBY STREET, SUITE 200, SALISBURY, MARYLAND 21781. PHONE: 410-738-2200. FAX: 410-738-2201.

PROJECT NO. 103

E